



WELCOME TO CT STATE - QUINEBAUG VALLEY

WE'RE GLAD YOU'RE HERE!

As your Guided Pathways Advisor, I'm excited to learn about your career and academic goals - whether it is transferring to a 4-year institution, employment or professional/personal development.

It's wise to meet with your advisor to ensure you are meeting program requirements and adhering to course sequencing. Advising can provide you with information about resources on campus such as tutoring, the [Office of Disability and Accessibility Services](#), technology rentals, and more.

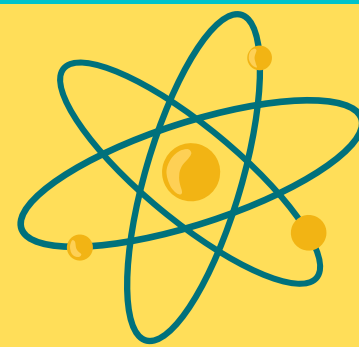
Know that I am here to help with questions or to assist in planning for your future. I look forward to connecting with you and cheering you on!



To ensure a productive advising session, ensure placement documents and transcripts are on file with Admissions prior to meeting.

Without [placement information](#) and/or [transfer credits](#) in the system, advisors are limited in assisting you with course selection and you WILL need to reschedule.

For assistance with submitting placement documents, contact the QV-One Stop at: QV-OneStop@ct.edu | [860-932-4020](tel:860-932-4020).



SCHEDULE AN APPOINTMENT

Deadlines are approaching and classes are quickly filling! New students are encouraged to meet in-person for their first advising appointment. [Book an appointment here!](#) Classes begin August 28th.

Access registration, Blackboard, DegreeWorks and your myCTState student email via my.ctstate.edu. Information may be sent to you prior to your appointment. Carefully review any correspondence and follow instructions as provided.

HELPFUL RESOURCES

[Logging into myCTState](#)

[How to Search for Classes](#)

[How to use Degree Works](#)

[How to Register/Add/Drop](#)

[Accessing Microsoft Apps via Portal](#)

[Academic Calendar](#)

[List of Programs](#)

[Course Descriptions](#)

[CT State Financial Aid Website](#)

[Free College in CT \(PACT\)](#)

Trouble accessing your myCTState account? Lost password > [Get 24/7/365 help via the Online Help Desk.](#)

[Quinebaug Valley GP Advising Website](#)