

Human Services @ QVCC Webinar

Maternal Healthcare Deserts & the Social Determinants of Health

December 9, 2022

Shelley Buchbinder PhD, MSW
Assistant Professor, Social Work Studies & Human Services @ QVCC

1

Housekeeping



Audio & video are muted

Call-in if you have audio issues



Participate

Chat



Follow-up email

Recording
Presentation



No CEs available

[Email with questions](#)

Learn more about [Human Services @ QV](#)

2

Webinar Objectives

Identify social determinants of health

Identify causes and consequences of limited access to healthcare

Identify what maternal healthcare deserts are and their impact on local families

3

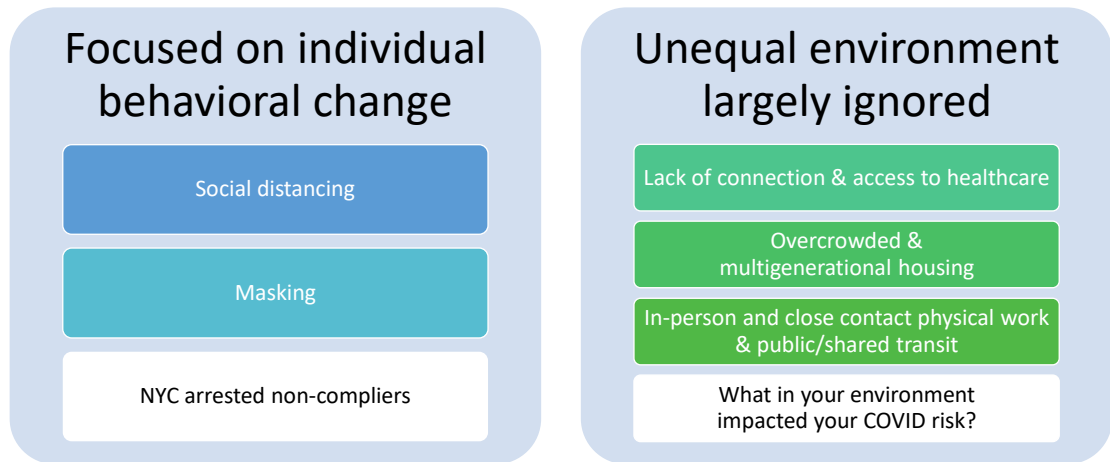
Unequal Health Burdens of the Pandemic



[Health Disparities and Social Determinants of Health in Connecticut](#) (2021, p.27)

4

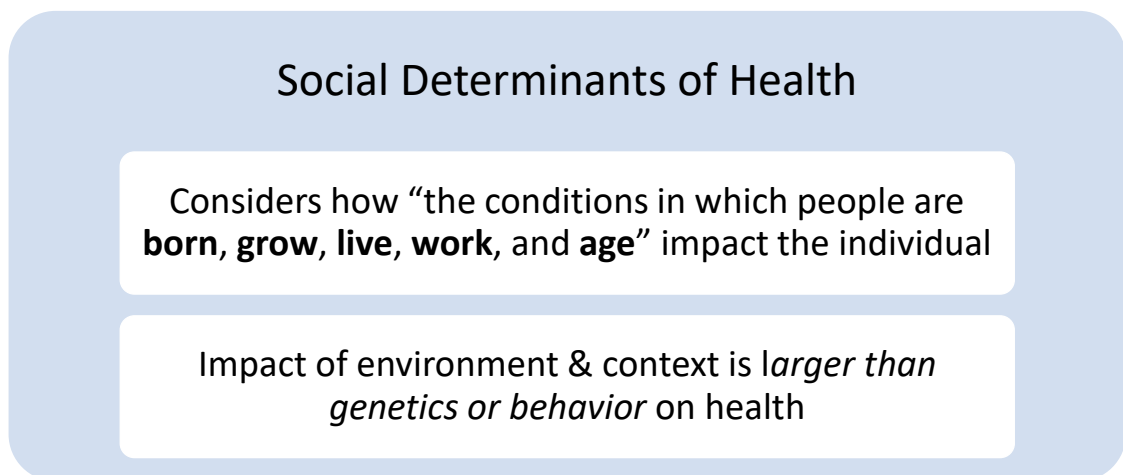
Pre-Vaccine Pandemic Responses



(Southhall, 2020; Snowden & Graaf, 2021)

5

Shift Focus to Environment and Context

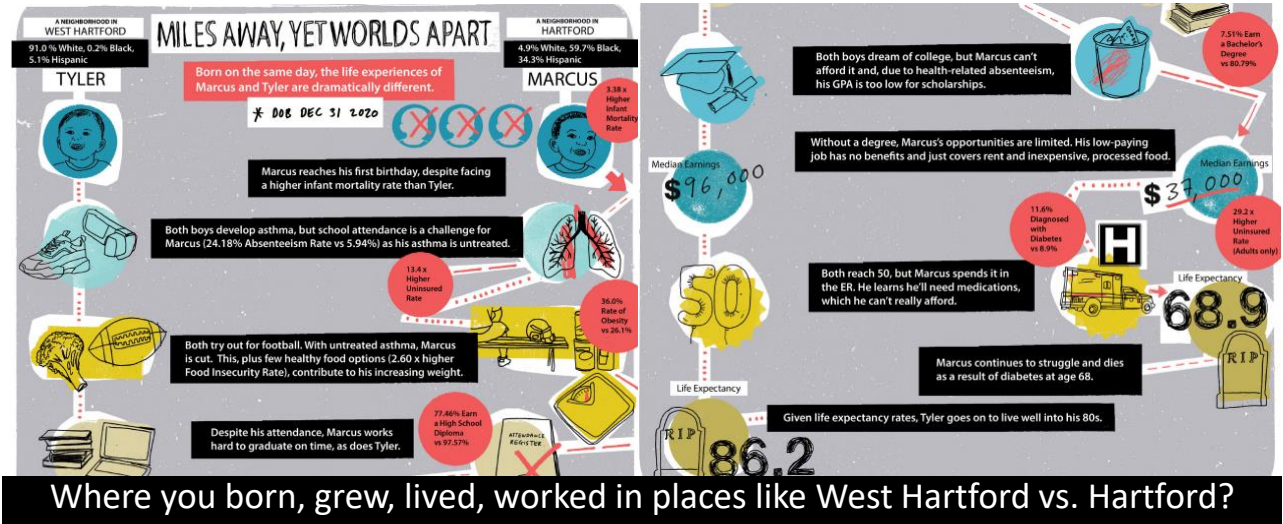


(Marmot et al., 2008; Sederer, 2016)

6

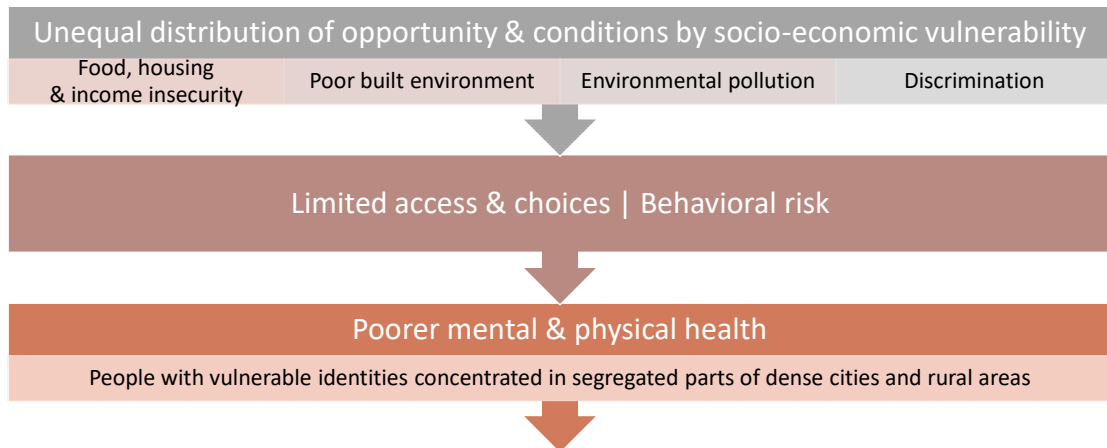
Social Determinants of Health in CT

Tyler in West Hartford vs Marcus in Hartford



7

Impact of Environment on Choices

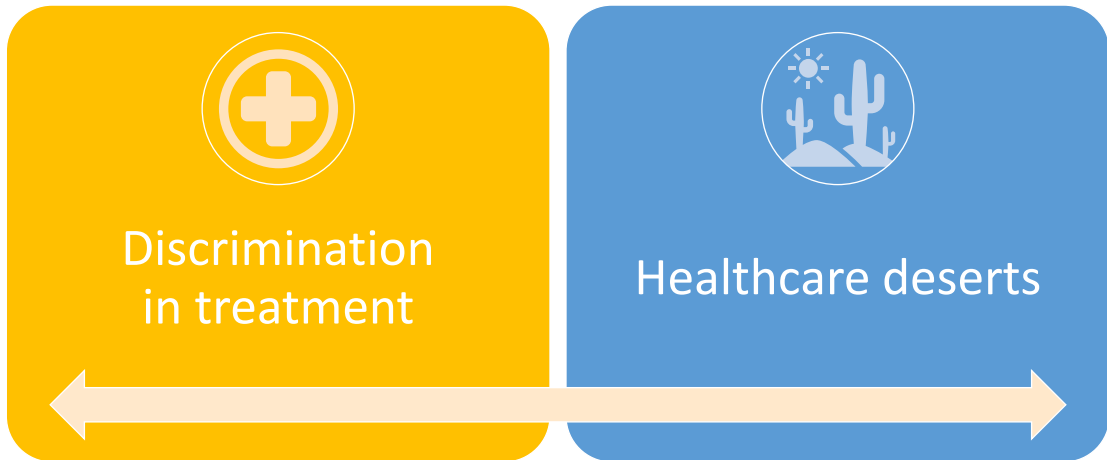


Example of unequal distribution of opportunity related to food?

(Compton & Shim, 2015; Shim & Compton, 2020)

8

Unequal Healthcare Environment



9

Racially
Discriminatory
Healthcare

Biased medical experimentation

- Early surgeries
- Effects of untreated syphilis
- Relationship between genetics & aggression

Poor treatment

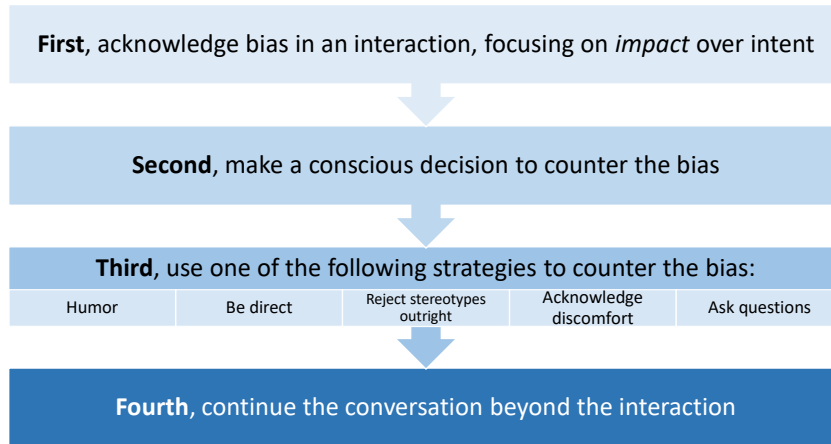
- Disbelieved when share concerns
- Assumed behaviors (e.g., drugs)
- Denied tests, treatments or pain medication

Experienced or seen unequal treatment?

(Scharff et al., 2010; Washington, 2020)

10

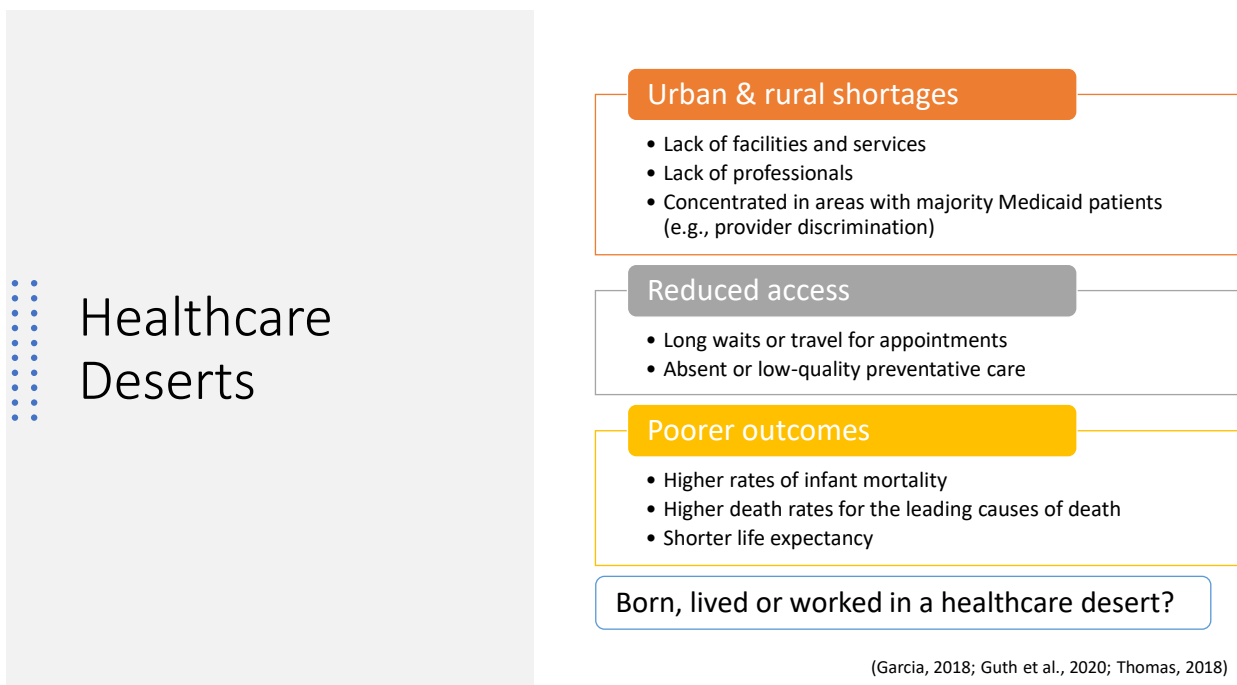
Counter Bias When Observed



Worried about Bias? Take an [Implicit Bias Test](#)

Adapted from Marcelin et al. (2019)

11



12

Growth of Maternity Deserts



[Why the problem of maternity care deserts is getting worse](#) (PBS, 2022)

13

Maternity Care is a Health Equity Issue

Worse birthing outcomes and higher infant mortality for people who are Black Indigenous and People of Color



Higher rates of Medicaid



Less access prenatal and labor and delivery services



Higher rates of out-of-maternity unit deliveries & more

- Infant mortality within 24 hours of birth
- Premature birth & admission to neonatal care units
- Severe postpartum hemorrhage for person giving birth

(Buchman et al., 2021, Hill et al., 2022)

14

CT's Rural Maternity Care Deserts



Recent hospitals suspending labor and delivery

- Windham Hospital (Windham County)
- Sharon Hospital (Litchfield County)
- Johnson Memorial Hospital (Tolland County)



CT's sole rural labor and delivery service

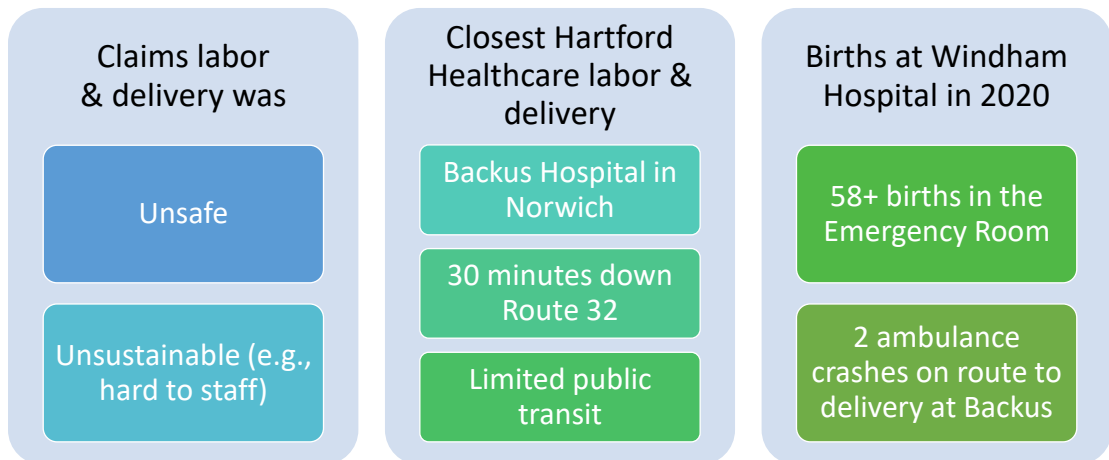
- Day Kimball Hospital in Putnam (Windham County)

Heard of these closures? Others?

(Golvala, 2021, Phillips, 2022)

15

Closure of Windham Hospital Labor and Delivery after Hartford HealthCare



(Buchbinder, 2021)

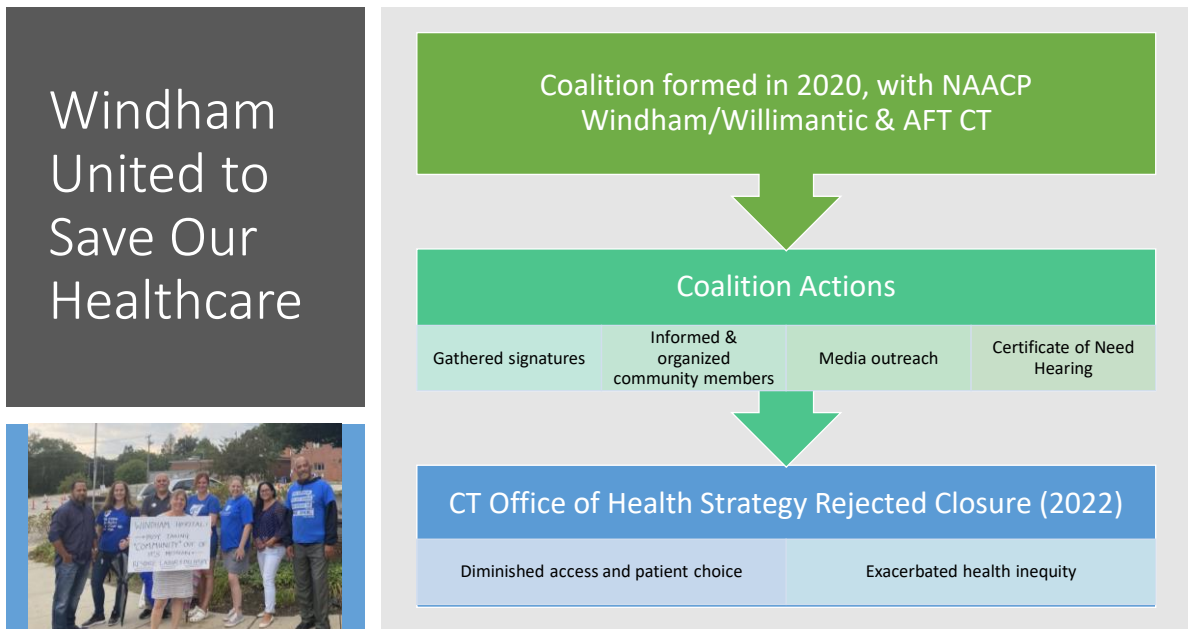
16

Windham's Delivering Families are Vulnerable

82% insured by Medicaid	Majority speak language other than English at home	13% of Windham residents have no vehicle
Poor access to intertown public transit	Limited access before and after birth	What can be done?

(Golvala, 2021)

17



Windham United to Save Our Healthcare [Facebook](#) & [NAACP timeline](#)

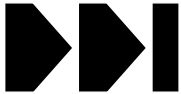
18

Wrap Up



Follow Up Email

- Recording
- Presentation



Next Semester More Webinars

[Watch and Review Previous Fall 2022 Webinars](#)



- Adverse Childhood Experiences & Coping
- Policing Mental Health
- Gender Affirming Environments



Take Evaluation

- When you exit Webex

19

References

- Buchbinder, B. (2021, May 11). Hartford Healthcare must reopen the Windham Hospital Maternity Unit. *CT Mirror*. <https://ctmirror.org/2021/05/11/brenda-buchbinder-lcsw/>
- Buchman, T., Cliff, S., & Kashian, R. (2021). Maternity ward deserts in Wisconsin, 2011 and 2017. *Journal of Regional Analysis & Policy*, 51(2), 38-48. <https://irap.scholasticahq.com/api/v1/articles/27447-maternity-ward-deserts-in-wisconsin-2011-and-2017.pdf>
- Compton, M. T., & Shim, R. S. (2015). The social determinants of mental health. *Focus*, 13(4), 419-425. <https://focus.psychiatryonline.org/doi/pdf/10.1176/appi.focus.20150017>
- Garcia, Estevan A., (2018). The urban food desert as a model for the urban health care desert: Fundamental causes and economic considerations. *CUNY Academic Works*. https://academicworks.cuny.edu/sph_etds/25
- Golvala, K (2021, November 28). In some rural CT towns, hospital cuts mean fewer options for giving birth. *The CT Mirror*. <https://ctmirror.org/2021/11/28/rural-birthing-options-dwindle-as-hospitals-slash-labor-and-delivery-services/>
- Guth, M., Aritiga, S., & Pham, O. (2020). Effects of the ACA Medicaid expansion on racial disparities in health and health care. KFF.Org. <https://www.kff.org/medicaid/issue-brief/effects-of-the-aca-medicaid-expansion-on-racial-disparities-in-health-and-health-care/>
- Hill, L., Artiga, S and Ranji, U (2022, November 1). Racial disparities in maternal and infant health: Current status and efforts to address them. *KFF Foundation*.

20

References (con't)

- Marcelin, J. R., Siraj, D. S., Victor, R., Kotadia, S., & Maldonado, Y. A. (2019). The impact of unconscious bias in healthcare: how to recognize and mitigate it. *The Journal of Infectious Diseases*, 220(220 Suppl 2), S62–S73. <https://doi.org/10.1093/infdis/jiz214>
- Marmot, M., Friel, S., Bell, R., Houweling, T. A., Taylor, S., & Commission on Social Determinants of Health. (2008). Closing the gap in a generation: health equity through action on the social determinants of health. *The Lancet*, 372(9650), 1661-1669. [https://doi.org/10.1016/S0140-6736\(08\)61690-6](https://doi.org/10.1016/S0140-6736(08)61690-6)
- Phillips, E (2022, June 9). Catholic system's acquisition to Day Kimball Hospital raises concerns. CT Mirror. <https://ctmirror.org/2022/06/09/catholic-covenant-health-acquisition-day-kimball-hospital-reproductive-services>
- Sederer L. I. (2016). The Social Determinants of Mental Health. *Psychiatric Services*, 67(2), 234–235. <https://doi.org/10.1176/appi.ps.201500232>
- Shim, R. S., & Compton, M. T. (2020). The social determinants of mental health: psychiatrists' roles in addressing discrimination and food insecurity. *Focus*, 18(1), 25-30. <https://doi.org/10.1176/appi.focus.20190035>
- Snowden, L. R., & Graaf, G. (2021). COVID-19, social determinants past, present, and future, and African Americans' health. *Journal Of Racial and Ethnic Health Disparities*, 8(1), 12-20. <https://doi.org/10.1007/s40615-020-00923-3>