

Quinebaug Valley Community College
Organizational Chart – July 1, 2016

President
Board of Regents

CC President (U)
Carlee Drummer
51476 FT BU50

Executive Assistant to the President
CC Educational Services Aide (U)
Jennifer Green
111475 FT BU20

Dean of Administration
Human Resources Director
EEO Officer and Title IX Coordinator
CC Dean (U)
Paul Martland
98958 FT BU50

Dean of Academic Affairs and Student
Services
CC Dean (U)
Alfred Williams
51560 FT BU50

Associate Dean, Willimantic Center
CC Dean (U)
Vacant
FT BU46

Associate Dean of Institutional Research and
Effectiveness
CC Educational Assistant (U)
Donna Sohan
78406 FT BU46

Director of Institutional Advancement
CC Professional 19-12 (U)
Monique Wolanin
51614 PT 86% BU46

Director of Marketing and Public Relations
CC Professional 19-12 (U)
Susan Breault
51597 PT 86% BU46

College Management

CC President (U)
Carlee Drummer
51476 FT BU50

Director of Marketing and Public
Relations
CC Professional 19-12 (U)
Susan Breault
51597 PT 86% BU46

Graphics Specialist
CC Educational Assistant 16-12 (U)
Jennifer Espeseth
86528 PT 57% BU46

Marketing/Communications
Associate
CC Professional 16-12 (U)
Margaret Huoppi
77460 PT86% BU46

Marketing

Quinebaug Valley Community College
Organizational Chart
Administrative Services
July 1, 2016

Administrative Services
Secretary 2 (C)
Irina Komarova
51593 FT BU07

Dean of Administration
Human Resources Director
EEO Officer and Title IX Coordinator
CC Dean (U)
Paul Martland
98958 FT BU50

Building Maint. Supervisor (C)
Martin Charette
51497 FT BU06

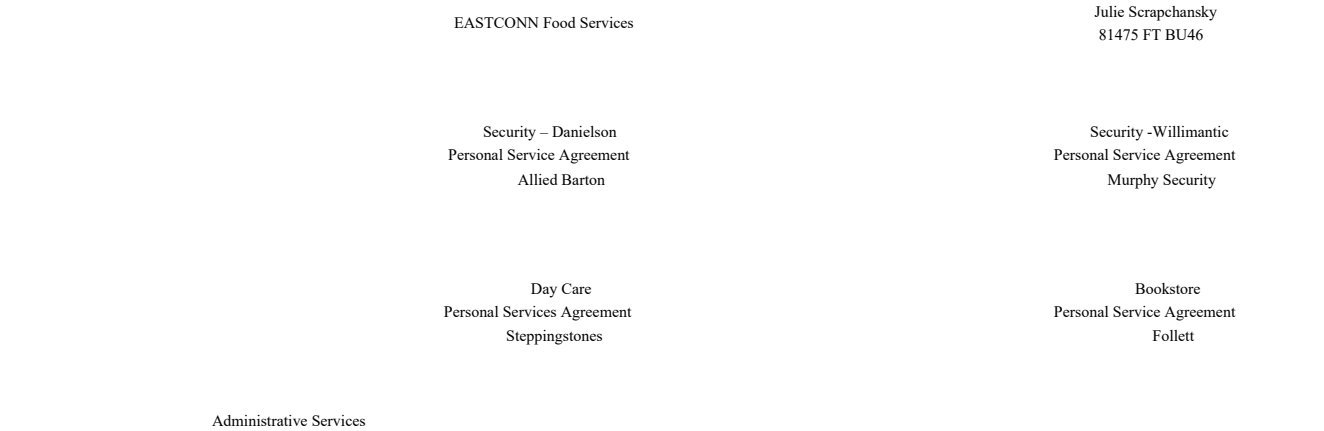
Director of Finance and Adm.
Services
CC Professional 21-12 (U)
Alessandra Lundberg
51493 FT BU46

Dir. of Information Technology
CC Professional 20-12 (U)
Jarrod Borek
51576 FT BU46

Dir. Of Manufacturing Technology
Center
CC Professional 19-12 (U)
Stephen LaPointe
106123 FT BU46

Food Services Operations
Personal Service Agreement

STRIDE Director
CC Educational Assistant19-12 (U)



Quinebaug Valley Community College
Organizational Chart – Administrative Services
Fiscal Operations – July 1, 2016



Quinebaug Valley Community College
Organizational Chart – Administrative Services
Information Technology – July 1, 2016

Dean of Administration
Human Resources Director
EEO Officer and Title IX Coordinator
CC Dean (U)
Paul Martland
98958 FT BU50

Director of Information Technology
CC Professional 20-12 (U)
Jarrod Borek
51576 FT BU46

Info Technology Technician 2
CC Professional 16-12 (U)
David Burdette
51502 FT BU46

Network Manager
CC Professional 17-12 (U)
William Weiss
51589 FT BU46

Information Technology Manager
CC Professional 18-12 (U)
Jeremy Espeseth
51575 FT BU46

Info Technology Technician 2
CC Professional 14-12 (U)
Michael Benoit
96475 FT BU46

Shared Position with
EASTCONN

Information Technology

Quinebaug Valley Community College
Organizational Chart
Administrative Services - Facilities
July 1, 2016

Dean of Administration
Human Resources Director
EEO Officer and Title IX Coordinator
CC Dean (U)
Paul Martland
98958 FT BU50

Building Maintenance Supervisor (C)
Martin Charette
51497 FT BU06

General Trades Worker (C)
Robert Therrien
51500 FT BU06

Materials Storage Specialist (C)
Elizabeth Santerre
51504 FT BU06

Lead Custodian (C)

		Ginger Bumpus 51498 FT BU06	
	Skilled Maintainer (C) Neil Wippert 85022 FT BU06		
			Custodian (C) Omar DeJesus-Torres 51501 FT BU06
	Skilled Maintainer (C) John Knight 51499 FT BU06		
			Custodian (C) Jarrod Hebert 85019 FT BU06
	Skilled Maintainer (C) Eugenio Valentine 51502 FT BU06		
			Custodian (C) Kenneth Duprey 85020 FT BU06
	Maintainer (C) Sharon Coman 79131 FT BU06		
Facilities			

Quinebaug Valley Community College
Organizational Chart – Human Resources/Payroll
July 1, 2016

Dean of Administration
Human Resources Director
EEO Officer and Title IX Coordinator
CC Dean (U)
Paul Martland
98958 FT BU50

Payroll/Human Resources
Associate Director of Human
Resources (U)
Vacant
86793 FT BU

Payroll/Human Resources
Human Resources Assistant (C)
Lois Kelley
81807 FT CR03

Quinebaug Valley Community College
Organizational Chart
Advanced Manufacturing Technology Center – July 1, 2016

Dean of Academic Affairs and Student
Services
CC Dean (U)
Alfred Williams
51560 FT BU50

Dean of Administration
Human Resources Director
EEO Officer and Title IX Coordinator
CC Dean (U)
Paul Martland
98958 FT BU50

Dir. of Advanced Manufacturing
Technology Center
CC Professional 19-12 (U)
Stephen LaPointe
106123 FT BU46

MTC Assistant
CC Professional 16-12 (U)
Michael Santangini
101982 PT86% BU46

MTC Educational Assistant
CC Educational Assistant 16-12 (U)
Jodi Clark
101978 FT BU46

MTC Assistant
CC Educational Assistant 16-12 (U)
Phillip Peterson
103878 PT86% BU46

MTC Assistant
CC Educational Assistant (U)
Douglas Durand
030537 PT 45% BU46

Data and Reporting Specialist
CC Educational Assistant 16-12 (U)
Sandra Gould
113121 PT 80% BU46

MTC Assistant
CC Educational Assistant (U)
Timothy Sabrowski
030537 PT 45% BU46

Cami Outreach Specialist
CC Educational Assistant 16-12 (U)
Andrew Morrison
114254 FT BU46

MTC

Quinebaug Valley Community College
Organizational Chart – Community Engagement
DOL – STRIDE PROGRAM
July 1, 2016

Dean of Administration
Human Resources Director
EEO Officer and Title IX Coordinator
CC Dean (U)
Paul Martland
98958 FT BU50

STRIDE Director
CC Educational Assistant 19-12 (U)
Julie Scrapchansky
81475 FT BU46

Program Associate
CC Educational Assistant 14-12(U)
Jennifer Eddy
88727 FT BU46

Job Placement Coordinator
CC Educational Assistant 17-12 (U)
Susan Gunderman
96725 FT BU46

Job Developer
CC Educational Assistant 16-12 (U)
Robert Hebert
96719 FT BU46

Job Developer
CC Educational Assistant 16-12 (U)
Anne Mehr
96720 PT 57% BU46

Job Developer
CC Educational Assistant 16-12 (U)
Maribel Laureano
74763 FT BU46

Career Specialist
CC Educational Assistant 16-12 (U)
Sarah Therrien
100065 FT BU46

STRIDE

Quinebaug Valley Community College
Organizational Chart – Academic Affairs
July 1, 2016

Dean of Academic Affairs and Student
Services
CC Dean (U)
Alfred Williams
51560 FT BU50

Administrative Assistant to the Dean of
Academic Affairs and Student Services
Administrative Assistant (C)
Christine Mailhot
51506 FT BU07

Director of Educational Technology
CC Professional 18-12 (U)
Pauline Clifford
51590 FT BU46

Academic Division Director
CC Professional 21-12 (U)
Jo-Ann Black
99311 FT BU46

Director of Library Services
CC Professional 20-12 (U)
Vacant
51482 FT BU46

Department Chairs

Academic Affairs

Quinebaug Valley Community College
Organizational Chart – Academic Affairs
Faculty – July 1, 2016

Dean of Academic Affairs and Student
Services
CC Dean (U)
Alfred Williams
51560 FT BU 50

Administrative Assistant to the Dean of
Academic Affairs and Student Services
Administrative Assistant (C)
Christine Mailhot
51506 FT BU07

Business- DC CC Professor (U) Erin Pagano 51491 FT BU46	Biology/Chemistry - DC CC Professor (U) John Lewis 81523 FT BU25	Political Science - DC CC Professor (U) Jayne Battye 51565 FT BU46	English - DC CC Professor (U) Scott DeShong 51562 FT BU25	Mathematics - DC CC Professor (U) Denise Walsh 51567 FT BU46
Human Services PC Human Services CC Associate Professor (U) Heath Hightower 51564 FT BU46	Engineering Science CC Assistant Professor (U) Jakob Spjut 89941 FT BU25	Psychology/Sociology CC Professor (U) Ling-Chuan Chu 81522 FT BU46	English/Communications CC Professor (U) Beth Alves 51577 FT BU46	Mathematics CC Assistant Professor (U) Joachim Bullacher 51596 FT BU46
Accounting PC Business CC Professor (U) Jennifer Oliver 51559 FT BU46	Biology CC Professor (U) Melissa Philion 51479 FT BU46	Instructor of Spanish CC Professor (U) Elkin Espitia-Loaiza 51568 FT BU46	PC Developmental English CC Professor (U) Jonathan Andersen 89756 FT BU25	Math / Remedial Math CC Professor (U) Joy Mark 51600 FT BU46
Engineering PC College of Technology CC Professor (U) Mark Vesligaj 51616 FT BU46		Humanities CC Instructor (U) Mark Lowe 51480 FT BU46	Developmental English CC Assistant Professor (U) Jane Carey 51585 FT BU25	Mathematics Instructor CC Instructor (U) Debora Myers 51485 FT BU 46
Medical Assisting PC Allied Health CC Professor (U) Cheryl Goretti 51579 FT BU46	Allied Health CC Professor (U) Cynthia Brassington 51595 FT BU46	Sociology/Anthropology CC Professor (U) Brian Donohue-Lynch 51495 FT BU46	English / Remedial English CC Professor (U) O. Brian Kaufman 84696 FT BU46	Mathematics CC Associate Professor (U) Kudzai Zvoma 84699 FT BU46
Fine Arts/Graphics PC Art CC Professor Ann Joly 84695 FT BU46	Fine Arts CC Professor (U) Mark Szantyr 51581 FT BU46			
PC Computer Science CC Associate Professor (U) Christopher Parden 106121 FT BU46	Computer Science Computer Science CC Associate Professor (U) Janet Hall 51561 FT BU46	Manufacturing Technology CC Instructor (U) VACANT 101983 FT BU46		
Early Childhood Education PC Early Childhood CC Professor (U) Susan Spencer 51584 FT BU25	Early Childhood Education CC Assistant Professor (U) Cynthia Shirshae 51558 FT BU46			

Quinebaug Valley Community College
Organizational Chart – Academic Affairs
Library Media Services – July 1, 2016

Dean of Academic Affairs and Student Services
CC Dean (U)
Alfred Williams
51560 FT BU50



Associate Director of Financial Aid
CC Professional 18-12 (U)
Donna Albeke
51583 FT BU46

Assistant Director of Admissions
CC Professional 16-12 (U)
VACANT
51607 FT BU46

Student Services Associate/
Records
CC Professional 16-12 (U)
Krissey Larrow
114324 FT BU46

Student Services

Quinebaug Valley Community College
Organizational Chart – Student Services
Advising and Retention Services – July 1, 2016

Dean of Academic Affairs and Student
Services
CC Dean (U)
Alfred Williams
51560 FT BU50

Director of Student Services
CC Professional 21-12 (U)
Amy Kacerik
51571 FT BU46

Director of Advising & Retention
CC Professional 20-12 (U)
Robert Kozlowski
51605 FT BU46

Director of Disability Services
CC Professional 19-12 (U)
Vacant
51492 FT BU46

Associate Director of Advising and
Retention
CC Professional 18-12 (U)
Vacant
95935 FT BU46

Learning Disabilities Specialist
CC Professional 18-12 (U)
Christopher Scarborough
51588 FT BU46

Student Retention Specialist
CC Professional 16-12 (U)
Vacant
106521 FT BU46

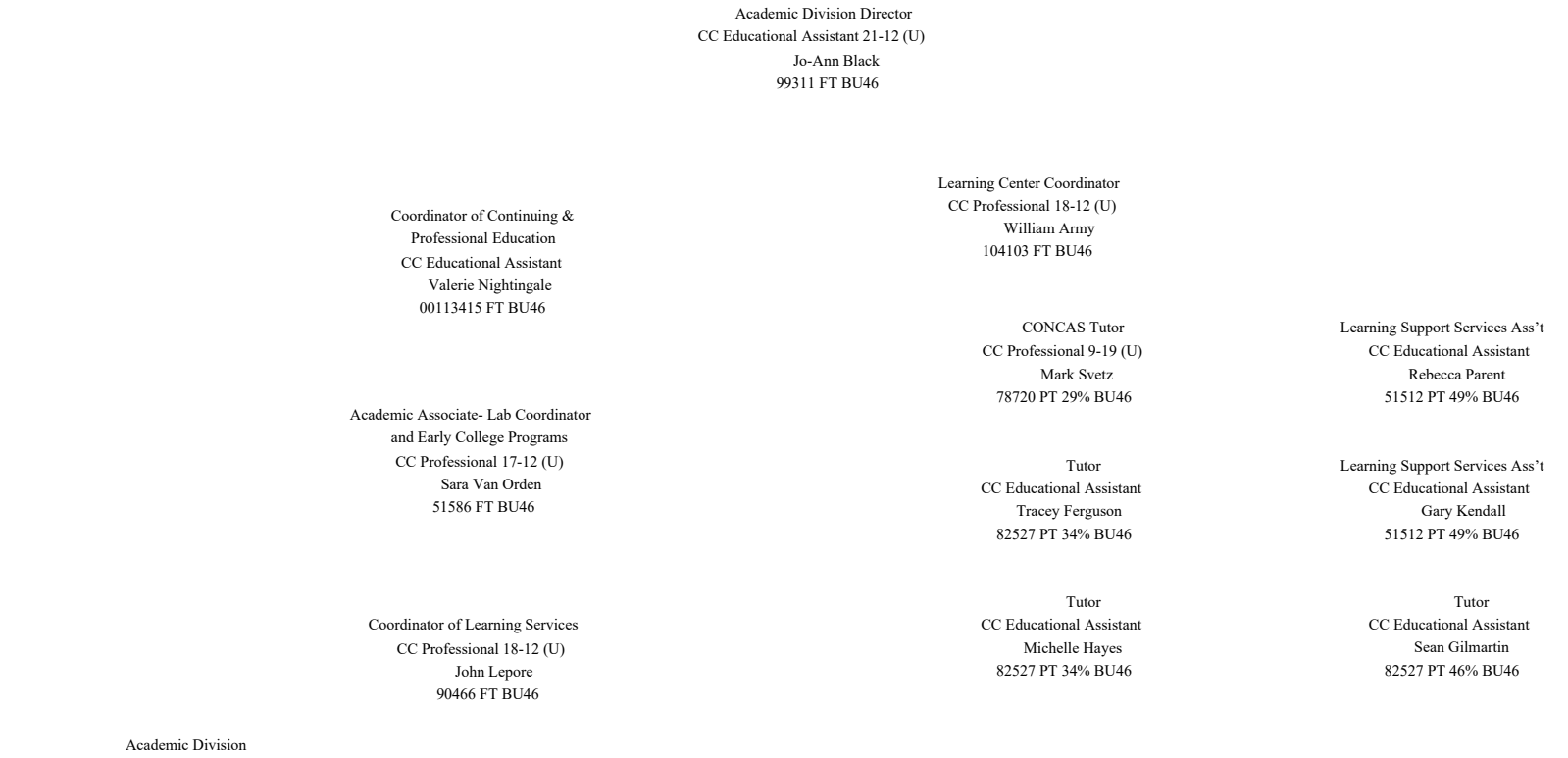
Developmental Education Specialist
CC Professional 16-12 (U)
Louise Brown
106522 FT BU46

Assoc. Director of Retntion & Advising
CC Professional 17-12 (U)
Randy Sanders
106521 FT BU46

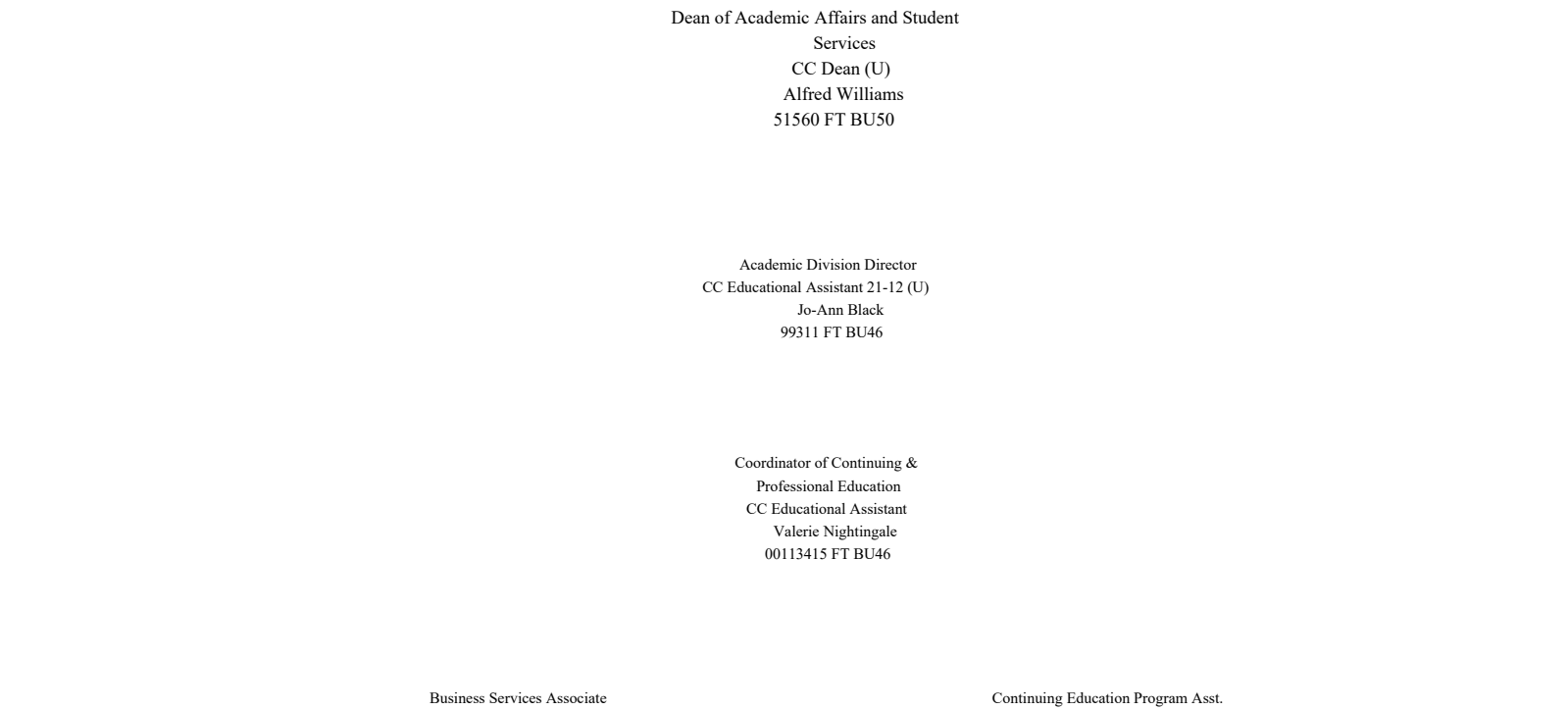
Advising

Quinebaug Valley Community College
Organizational Chart – Student Services
Academic Division – July 1, 2016

Dean of Academic Affairs and Student
Services
CC Dean (U)
Alfred Williams
51560 FT BU50



Quinebaug Valley Community College
Organizational Chart
Business and Industry – July 1, 2016



CC Educational Assistant 16-12 (U)
Linda Riquier
92875 FT BU46

CC Educational Assistant
Vacant
FT BU46

Business and Industry

Quinebaug Valley Community College
Organizational Chart – Willimantic Center
July 1, 2016

Associate Dean, Willimantic Center
CC Dean (U)
Vacant
FT BU46

Willimantic Center Assistant
CC Professional 12-12 (U)
Norma Marquez
51578 FT BU46

Clerk Typist (C)
Maria Garcia
51496 FT BU07