



10-Year Annual & Term Enrollment Report

(2003-04 through 2012-13)

Table of Contents

Enrollment (total, full-time, part-time), Credit Hour, and FTE Summary	4-6
Annual Enrollment, Credit Hour, and FTE	
Annual Enrollment by FT and PT Status	
Term Enrollment, FT/PT Status, Credit Hour, and FTE	
Enrollment by Student Type (new, continuing, readmit, transfer, Type 1)	7-8
Annual Enrollment by Student Type	
Term Enrollment by Student Type	
Enrollment by Gender	9-10
Annual Enrollment by Gender	
Term Enrollment by Gender	
Enrollment by Age	11-14
Measures of Central Tendency (mean, median, and mode)	11
Annual Enrollment of Age – Central Tendency & Range	
Age by Term – Measures of Central Tendency	
Age Group Distribution	13
Annual Age Distribution (IPEDS Age Groups)	
Age Group Distribution by Term	
Enrollment by Ethnicity and Race	15-17
Annual Enrollment by Ethnicity and Race	
Term Enrollment by Ethnicity and Race	
Enrollment by Degree and Major	18-28

Degree Distribution	18
Annual Enrollment by Degree Option	
Term Enrollment by Degree Option	
Primary Major Distribution	20
Annual Enrollment by Primary Major Option	
Term Enrollment by Primary Major Option	
Enrollment by Residency	30-35
Annual Enrollment by Service Area & Nearby Towns	
Term Enrollment by Service Area & Nearby Towns	
Enrollment by Recent High School Graduates	36-40
Annual Enrollment by High School	
Enrollment by High School and Student Type	

Mission Statement of the College

Quinebaug Valley Community College provides innovative educational, social, and cultural opportunities in a welcoming and supportive environment. We improve the quality of life in Northeastern Connecticut by engaging learners in the classroom, developing leaders in the workplace, and creating partners in the community.

College Leadership (as of Summer 2013):

President: Dr. Robert Miller (interim)

Dean of Academic Affairs: Jayne Battye (interim)

Dean of Administration: Paul Martland

Dean of Student Services: Alfred Williams (interim)

Director of Community and Professional Learning: vacant

Director of Human Services: Dennis Sidoti

Definitions of terms used in this report:

Annual – Terms, in sequence: Summer, Fall, Winter, and Spring.

Census Date – Most facts reported in this document are as of the census date (sometimes called freeze date) within a term, typically the 14th day of the semester.

Full-time – Students who are registered for 12 or more credits in a given semester, and have paid a flat rate for all those registered credits

Part-time – Students who pay a per-credit rate for their courses; most Part-time students have registered for 11 or fewer credits in that semester

Headcount – Unduplicated count of students registered within the academic year, regardless of the number of credits they've registered for

Generated Credit Hours – Sum of all academic credit hours registered, by all students (Full-time and Part-time), as of census date enrollment counts

Full-time Equivalent (FTE) – A common measure of enrollment, representing fifteen credit hours. It allows the college to count students using a standard unit of measure, a "Full-time equivalent."

Type "1" student: H.S. school student with concurrent enrollment at QVCC.

Central Tendency – The center or middle of a distribution of numbers. There are many measures of central tendency. The most common are the mean, median, and mode. [Used in this report for Age Distribution reporting]

Mean: Also known as the average value.

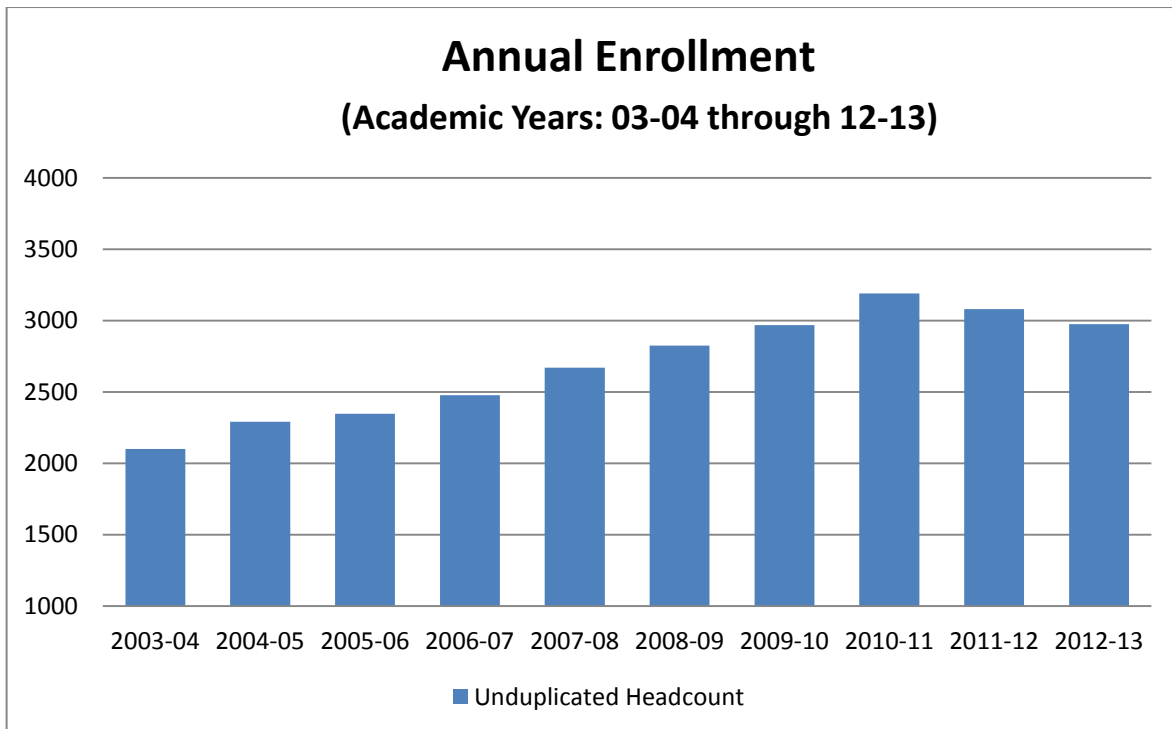
Median: The present in the middle when the numbers in a set of data are arranged in ascending or descending order. If the number of numbers in a data set is even, then the median is the mean of the two middle numbers.

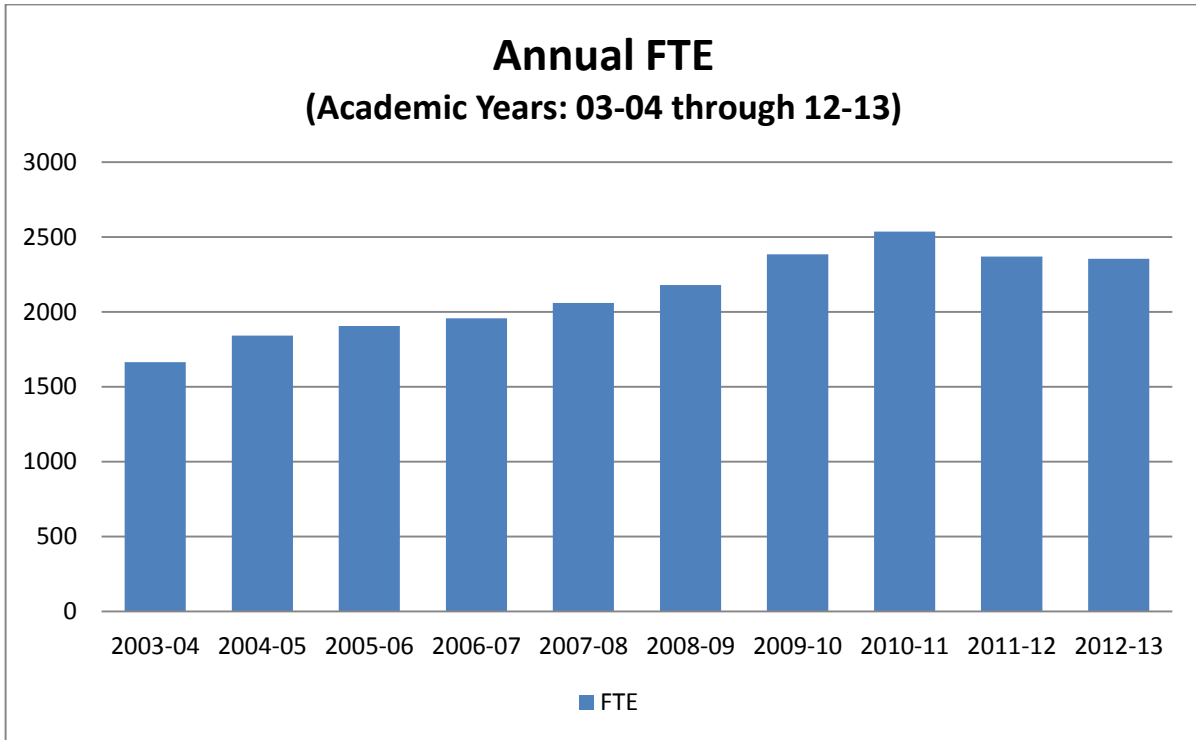
Mode: The value that occurs most frequently in a set of data.

Annual Enrollment, Credit Hour, and FTE:

Annual Enrollment, Credit Hour, and FTE			
Academic Year*	Headcount	Credit Hours	FTE
2003-04	2101	24951	1663
2004-05	2291	27636	1842
2005-06	2347	28602	1907
2006-07	2476	29354	1957
2007-08	2670	30893	2060
2008-09	2824	32693	2180
2009-10	2968	35785	2386
2010-11	3190	38042	2536
2011-12	3080	35532	2369
2012-13	2975	35306	2354

*Terms, in sequence: Summer, Fall, Winter, Spring





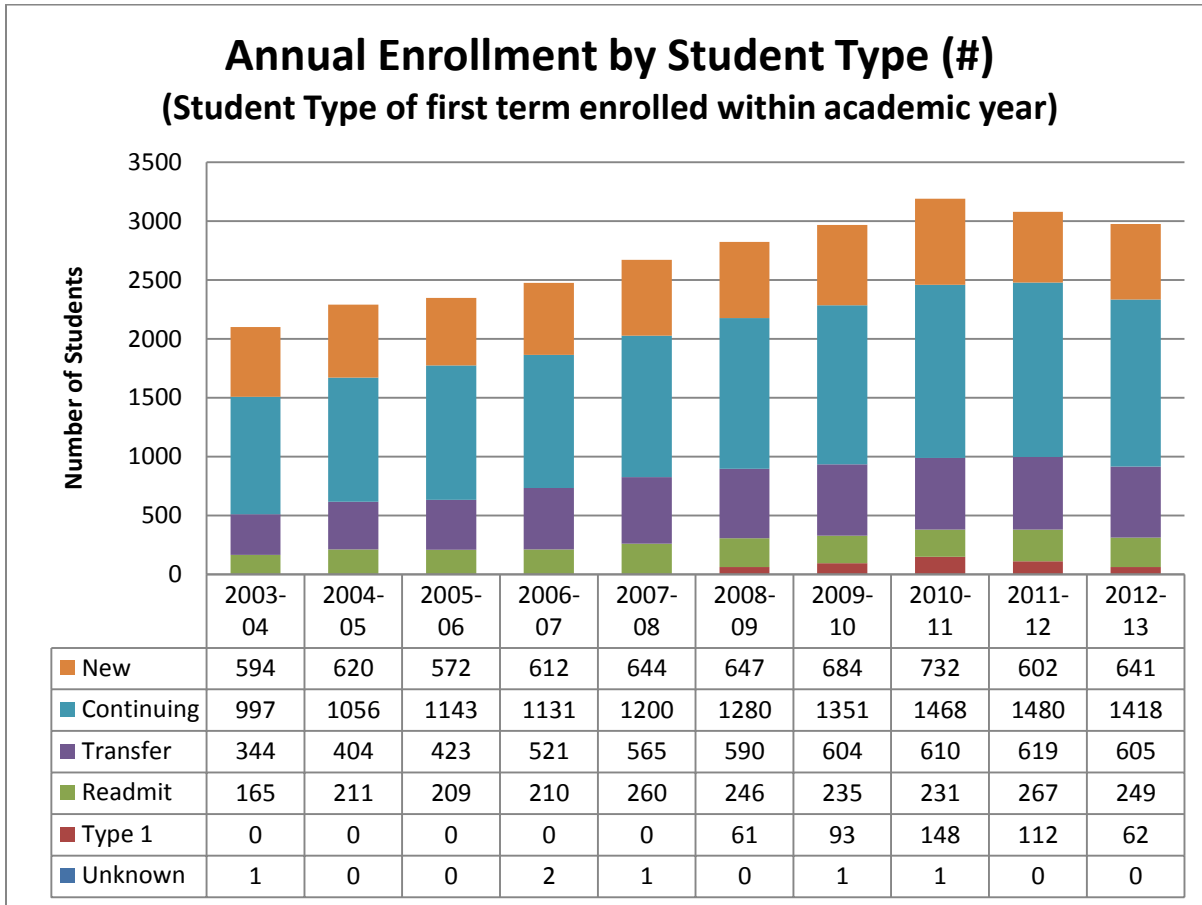
Annual Enrollment –FT/PT Status

Annual Enrollment by Full-Time/Part-Time Status (Status of first term enrolled within academic year)					
Academic Year	Total Count	Full Time	Part Time	Change in FT/PT Status within Academic Year	
				#	%
2003-04	2101	548	1553	197	9%
2004-05	2291	582	1709	248	11%
2005-06	2347	656	1691	240	10%
2006-07	2476	697	1779	243	10%
2007-08	2670	688	1982	267	10%
2008-09	2824	745	2079	285	10%
2009-10	2968	827	2141	325	11%
2010-11	3190	795	2395	373	12%
2011-12	3080	705	2375	318	10%
2012-13	2975	728	2247	322	11%

Term Enrollment, FT/PT Status, Credit Hour, and FTE

Term		Total Headcount	Full-Time Headcount	Part-Time Headcount	Credit Hours	FTE	Term		Total Headcount	Full-Time Headcount	Part-Time Headcount	Credit Hours	FTE
Summer	2003	273	0	273	906	60	Winter	2003	0	0	0	0	0
	2004	317	0	317	1177	78		2004	50	0	50	150	10
	2005	347	0	347	1308	87		2005	0	0	0	0	0
	2006	362	2	360	1367	91		2006	0	0	0	0	0
	2007	407	0	407	1553	104		2007	93	0	93	309	21
	2008	432	2	430	1644	110		2008	122	0	122	432	29
	2009	385	0	385	1421	95		2009	113	0	113	366	24
	2010	511	0	511	2012	134		2010	131	0	131	447	30
	2011	477	1	476	1922	128		2011	107	0	107	354	24
	2012	429	4	425	1703	114		2012	98	0	98	324	22
Fall	2003	1571	510	1061	12320	821	Spring	2004	1511	461	1050	11725	782
	2004	1721	571	1150	13693	913		2005	1624	492	1132	12616	841
	2005	1714	643	1071	14221	948		2006	1659	531	1128	13073	872
	2006	1779	669	1110	14572	971		2007	1706	554	1152	13415	894
	2007	1846	661	1185	15066	1004		2008	1789	569	1220	13965	931
	2008	1947	715	1232	15838	1056		2009	1893	595	1298	14779	985
	2009	2110	774	1336	17699	1180		2010	2032	656	1376	16299	1087
	2010	2288	783	1505	18904	1260		2011	2097	628	1469	16679	1112
	2011	2101	663	1438	17117	1141		2012	2088	592	1496	16139	1076
	2012	2094	691	1403	17285	1152		2013	2020	584	1436	15994	1066

Enrollment by Student Type



Annual Enrollment by Student Type (%)
(Student Type of first term enrolled within academic year)

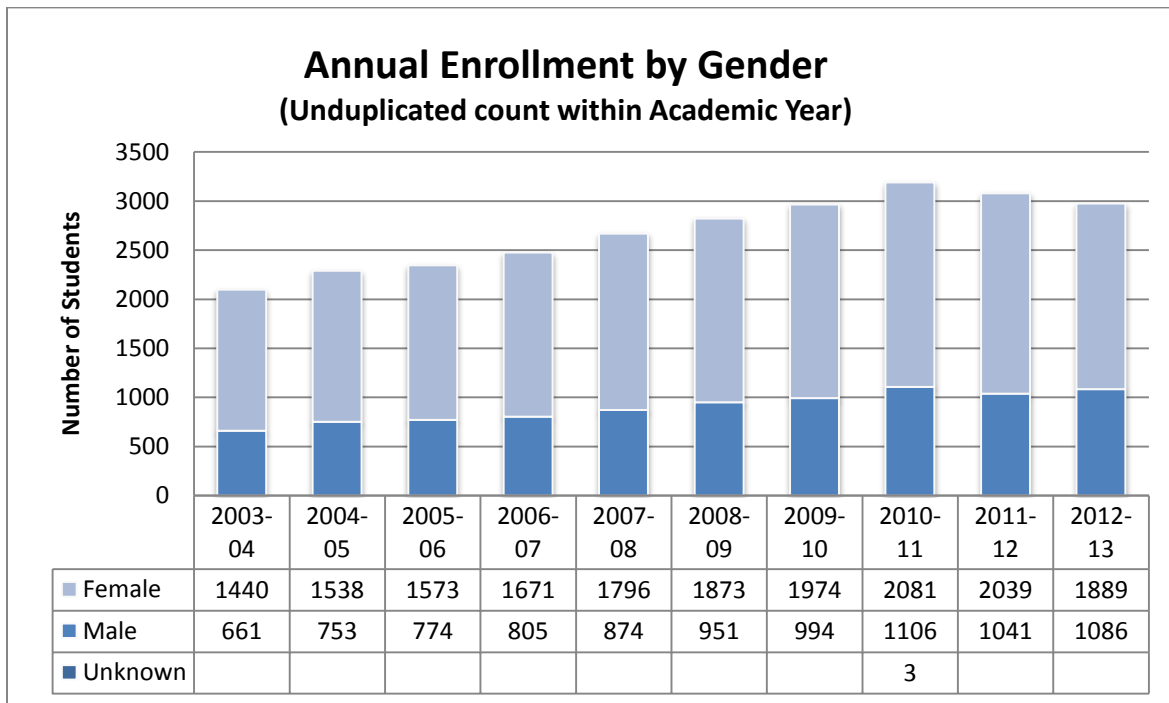
Term	Unduplicated Headcount	New	Continuing	Readmit	Transfer	Type 1*	Unknown
2003-04	2101	28%	47%	8%	16%	0%	0%
2004-05	2291	27%	46%	9%	18%	0%	0%
2005-06	2347	24%	49%	9%	18%	0%	0%
2006-07	2476	25%	46%	8%	21%	0%	0%
2007-08	2670	24%	45%	10%	21%	0%	0%
2008-09	2824	23%	45%	9%	21%	2%	0%
2009-10	2968	23%	46%	8%	20%	3%	0%
2010-11	3190	23%	46%	7%	19%	5%	0%
2011-12	3080	20%	48%	9%	20%	4%	0%
2012-13	2975	22%	48%	8%	20%	2%	0%

* Type 1 indicates H.S./QVCC concurrent enrollment

Term Enrollment by Student Type

Term		Total Count	New	Continuing	Readmit	Transfer	Type 1	Unknown			Term	Total Count	New	Continuing	Readmit	Transfer	Type 1	Unknown	
Summer	2003	273	63	154		55		1			Winter	2003							
	2004	317	49	173	30	65						2004	50	6	18	4	22		
	2005	347	46	177	31	93						2005							
	2006	362	39	165	24	133		1				2006							
	2007	407	50	192	26	138		1				2007	93		39		54		
	2008	432	32	223	21	153	3					2008	122	4	42	1	74	1	
	2009	385	31	204	16	127	6	1				2009	113	4	35	1	73		
	2010	511	19	311	16	146	19					2010	131	4	36	2	89		
	2011	477	13	265	19	170	10					2011	107	3	30	1	73		
	2012	429	35	224	22	144	4					2012	98	2	33		61	2	
Fall	2003	1571	412	901	90	168					Spring	2004	1511	142	1156	78	135		
	2004	1721	430	977	117	197						2005	1624	155	1263	70	136		
	2005	1714	392	1026	103	193						2006	1659	142	1282	83	152		
	2006	1779	439	1013	104	222		1				2007	1706	152	1289	82	183		
	2007	1846	455	1034	144	213						2008	1789	151	1375	90	173		
	2008	1947	470	1089	131	228	29					2009	1893	162	1432	96	160	43	
	2009	2110	524	1167	125	256	38					2010	2032	143	1546	93	173	77	
	2010	2288	576	1270	135	237	70					2011	2097	154	1598	81	159	104	1
	2011	2101	446	1239	140	231	45					2012	2088	158	1555	107	179	89	
	2012	2094	464	1233	123	242	32					2013	2020	172	1514	104	189	41	

Enrollment by Gender



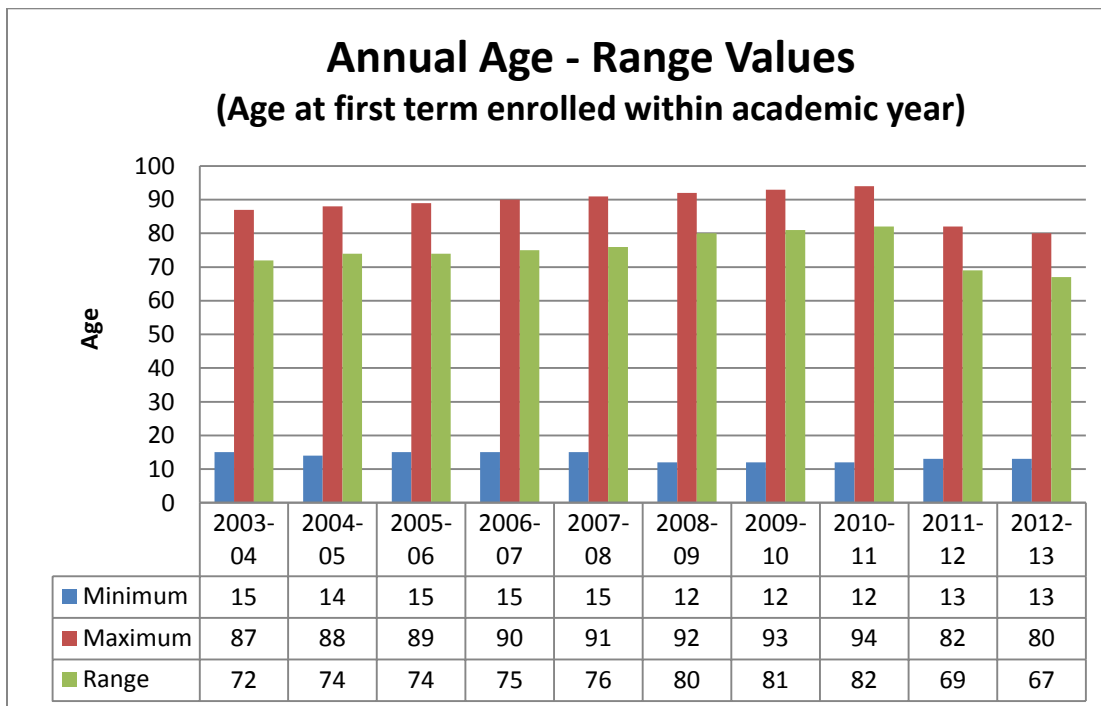
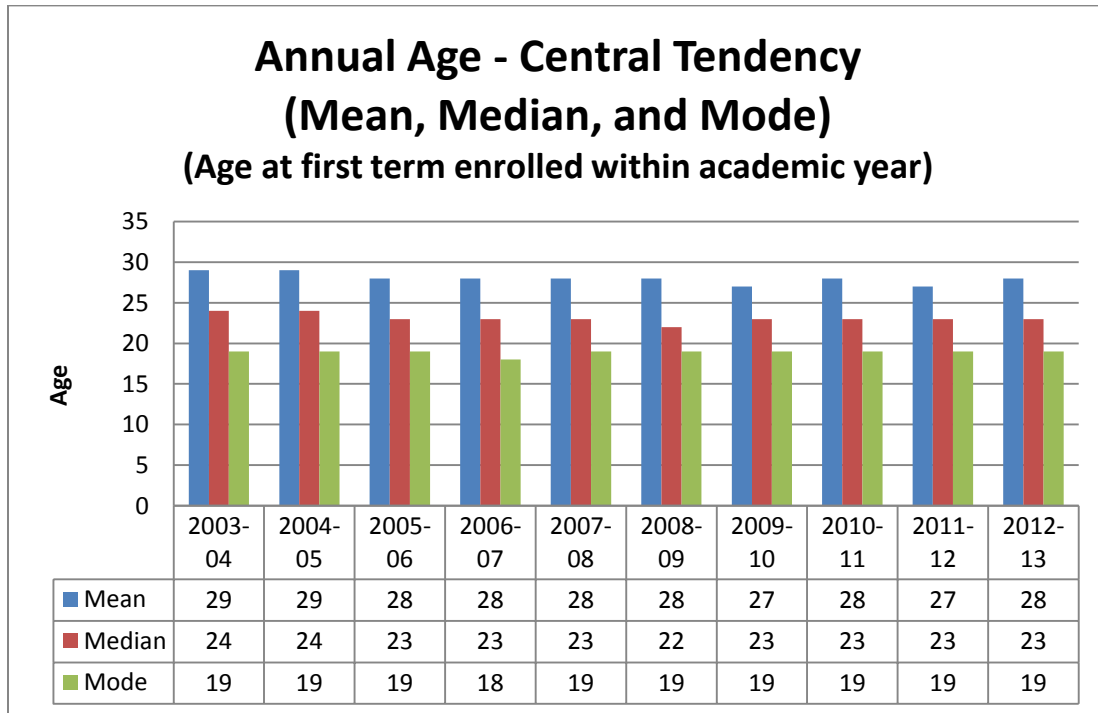
Annual Enrollment by Gender (# and %)
(Unduplicated count within Academic Year)

Term	Total Headcount	Female		Male		Unknown	
	#	#	%	#	%	#	%
2003-04	2101	1440	69%	661	31%	0	
2004-05	2291	1538	67%	753	33%	0	
2005-06	2347	1573	67%	774	33%	0	
2006-07	2476	1671	67%	805	33%	0	
2007-08	2670	1796	67%	874	33%	0	
2008-09	2824	1873	66%	951	34%	0	
2009-10	2968	1974	67%	994	33%	0	
2010-11	3190	2081	65%	1106	35%	3	0%
2011-12	3080	2039	66%	1041	34%	0	
2012-13	2975	1889	63%	1086	37%	0	

Term Enrollment by Gender

Term Enrollment by Gender						Term Enrollment by Gender					
Term		Total Count	Female	Male	Unknown	Term		Total Count	Female	Male	Unknown
Summer	2003	273	192	81		Winter	2003	0			
	2004	317	229	88			2004	50	29	21	
	2005	347	262	85			2005	0			
	2006	362	261	101			2006	0			
	2007	407	289	118			2007	93	66	27	
	2008	432	315	117			2008	122	88	34	
	2009	385	288	97			2009	113	81	32	
	2010	511	395	115	1		2010	131	93	38	
	2011	477	334	143			2011	107	73	34	
	2012	429	301	128			2012	98	60	38	
Fall	2003	1571	1073	498		Spring	2004	1511	1059	452	
	2004	1721	1181	540			2005	1624	1119	505	
	2005	1714	1162	552			2006	1659	1120	539	
	2006	1779	1205	574			2007	1706	1141	565	
	2007	1846	1239	607			2008	1789	1184	605	
	2008	1947	1265	682			2009	1893	1271	622	
	2009	2110	1402	708			2010	2032	1358	674	
	2010	2288	1510	778			2011	2097	1345	749	3
	2011	2101	1394	707			2012	2088	1387	701	
	2012	2094	1327	767			2013	2020	1257	763	

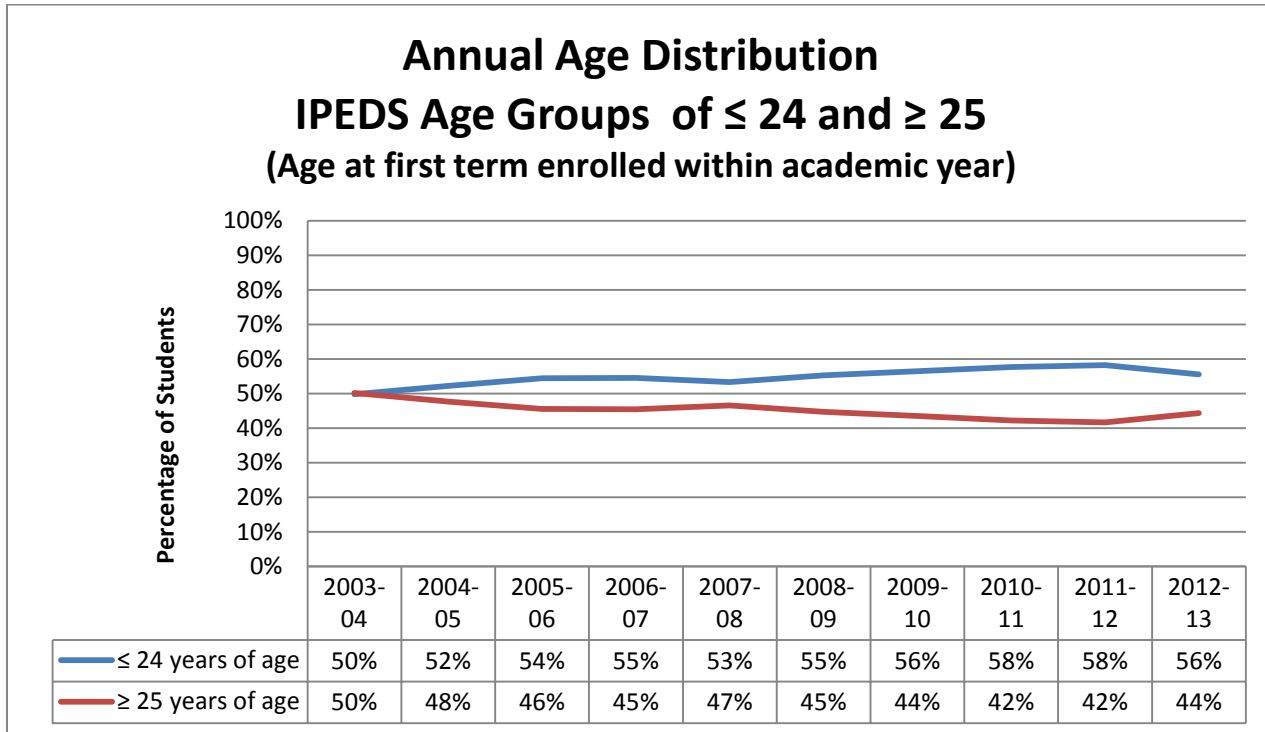
Enrollment by Age - Central Tendency & Range



Age by Term - Measures of Central Tendency

Term		Mean	Median	Mode	Minimum	Maximum	Term		Mean	Median	Mode	Minimum	Maximum
Summer	2003	30	26	19	15	65	Winter	2003					
	2004	30	26	19	14	66		2004	35	31	28	23	56
	2005	29	25	19	15	58		2005					
	2006	29	24	20	17	62		2006					
	2007	28	23	19	15	67		2007	26	22	19	16	52
	2008	28	23	20	16	63		2008	31	27	25	22	60
	2009	29	25	19	15	59		2009	26	22	21	17	53
	2010	29	25	19	16	66		2010	26	21	21	17	62
	2011	28	24	20	15	64		2011	25	22	21	18	51
	2012	28	24	20	15	65		2012	25	22	21	17	55
Fall	2003	29	24	19	15	87	Spring	2004	30	25	19	16	87
	2004	29	23	19	15	78		2005	29	24	19	15	88
	2005	28	22	19	16	89		2006	28	23	19	16	89
	2006	28	23	18	15	90		2007	28	23	19	15	86
	2007	28	23	19	15	91		2008	29	24	19	16	91
	2008	27	22	18	14	92		2009	27	23	19	12	92
	2009	27	22	18	12	74		2010	28	23	19	13	93
	2010	27	22	18	14	94		2011	28	23	19	12	94
	2011	27	23	18	13	76		2012	27	23	18	14	82
	2012	28	23	18	13	80		2013	28	23	19	14	76

Enrollment by Age - Age Group Distribution



Annual Age Distribution (Count & Percentage with Academic Year)								
Academic Year	Data Type	All Ages	≤ 19	20 - 24	25 - 34	35 - 44	45 - 64	≥ 65
2003-04	#	2101	532	515	406	384	250	14
	%	100%	25%	25%	19%	18%	12%	1%
2004-05	#	2291	586	611	434	376	260	24
	%	100%	26%	27%	19%	16%	11%	1%
2005-06	#	2347	621	657	470	330	252	17
	%	100%	26%	28%	20%	14%	11%	1%
2006-07	#	2476	655	695	484	351	268	23
	%	100%	26%	28%	20%	14%	11%	1%
2007-08	#	2670	704	721	556	376	282	31
	%	100%	26%	27%	21%	14%	11%	1%
2008-09	#	2824	749	812	598	370	272	23
	%	100%	27%	29%	21%	13%	10%	1%
2009-10	#	2968	826	850	624	364	277	27
	%	100%	28%	29%	21%	12%	9%	1%
2010-11	#	3190	922	920	635	365	319	29
	%	100%	29%	29%	20%	11%	10%	1%
2011-12	#	3080	829	966	626	328	307	24
	%	100%	27%	31%	20%	11%	10%	1%
2012-13	#	2975	739	915	652	326	313	30
	%	100%	25%	31%	22%	11%	11%	1%

Age Group Distribution by Term

Term		All Ages	≤19	20 - 24	25 - 34	35 - 44	45 - 64	≥ 65
Summer	2003	273	58	61	66	49	38	1
	2004	317	61	81	63	67	44	1
	2005	347	73	91	77	63	43	0
	2006	362	63	122	70	66	41	0
	2007	407	90	131	85	60	40	1
	2008	432	77	160	84	70	41	0
	2009	385	71	117	92	63	42	0
	2010	511	102	139	133	75	61	1
	2011	477	82	166	110	60	59	0
	2012	429	76	149	100	56	46	2
Fall	2003	1571	416	397	299	277	171	11
	2004	1721	456	469	313	272	196	15
	2005	1714	495	493	310	222	181	13
	2006	1779	513	484	320	237	209	16
	2007	1846	548	477	372	255	173	21
	2008	1947	589	534	361	262	183	18
	2009	2110	638	604	418	254	175	21
	2010	2288	702	618	453	261	235	19
	2011	2101	601	628	408	230	215	19
	2012	2094	570	604	464	214	219	23
Term		All Ages	≤19	20 - 24	25 - 34	35 - 44	45 - 64	≥ 65
Winter	2003	0						
	2004	50	0	1	31	8	10	0
	2005	0						
	2006	0						
	2007	93	18	37	22	10	6	0
	2008	122	0	21	73	13	15	0
	2009	113	17	56	22	14	4	0
	2010	131	23	69	20	8	11	0
	2011	107	19	60	15	7	6	0
	2012	98	12	54	20	7	5	0
Spring	2004	1511	350	391	281	291	190	8
	2005	1624	401	464	301	265	176	17
	2006	1659	401	500	332	241	174	11
	2007	1706	442	500	343	241	167	13
	2008	1789	457	491	373	267	178	23
	2009	1893	515	560	398	235	166	19
	2010	2032	571	560	431	245	207	18
	2011	2097	609	575	435	238	220	20
	2012	2088	569	628	431	224	218	18
	2013	2020	497	615	458	220	212	18

Enrollment by Ethnicity and Race

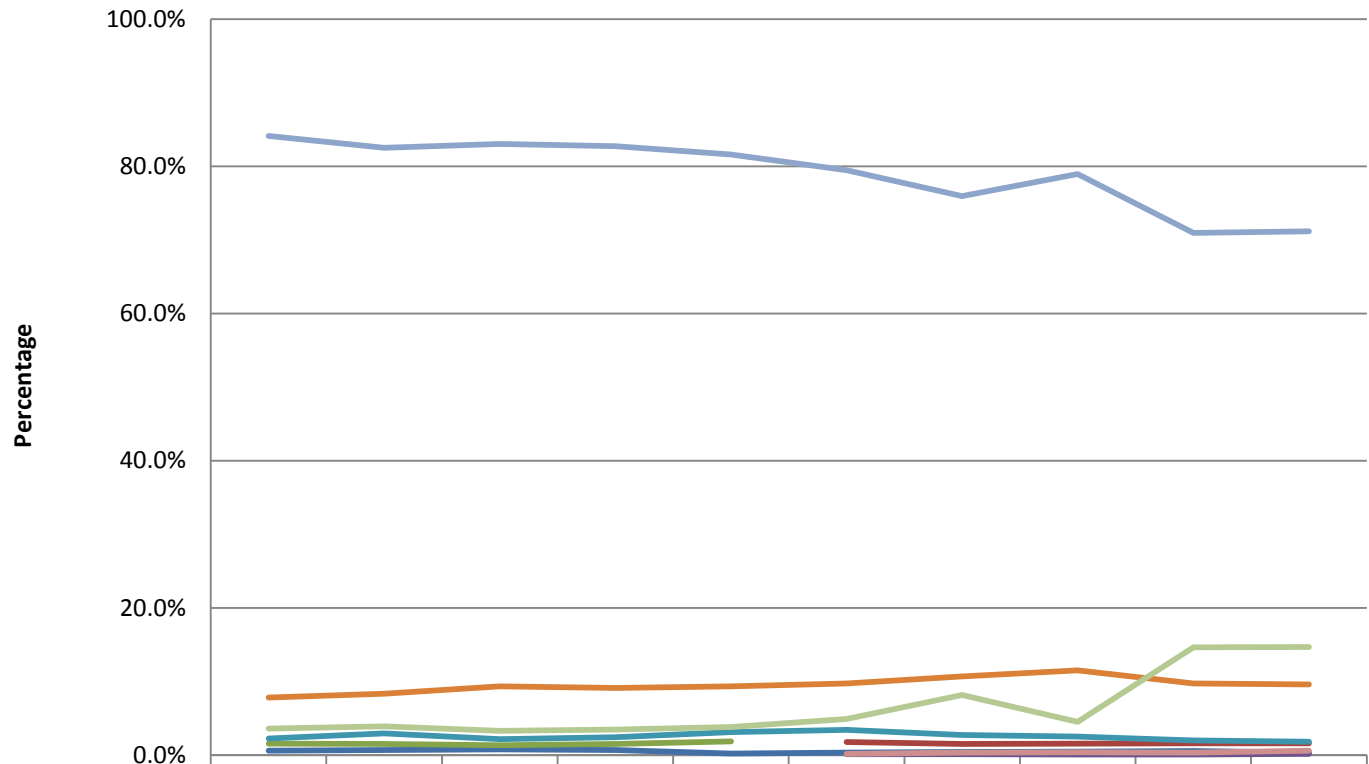
Ethnicity Categories changed in 2008: Three new categories were created. The category, 'Asian/Pacific Islander' was redefined as 'Asian' or 'Native Hawaiian or Other Pacific Islander'. The third category, 'Multiple Races Reported', was created for placement of students listing multiple races, excluding 'Hispanic/Latino'. Students identified as 'Hispanic or Latino' ethnicity were/are identified as 'Hispanic or Latino' regardless of subsequent race identification.

Another change introduced in 2008 was having ethnicity and race separated into two questions with students being asked to identify their ethnicity with the response options: 'Hispanic', 'Not Hispanic', or 'Prefer not to respond', followed by a racial identity question. The addition of this question resulted in a large increase of the number of students declining to self-identify. In 2012, the ethnicity question was changed to 'Do you consider yourself Hispanic/Latino? Yes or No' with no mention of ethnicity.

Annual Enrollment by Ethnicity and Race

<i>Ethnicity & Race</i>	<i>Academic Year</i>									
	<i>2003-04</i>	<i>2004-05</i>	<i>2005-06</i>	<i>2006-07</i>	<i>2007-08</i>	<i>2008-09</i>	<i>2009-10</i>	<i>2010-11</i>	<i>2011-12</i>	<i>2012-13</i>
<i>American Indian or Alaskan Native</i>	13	16	18	17	6	10	13	15	17	10
<i>Asian (2008-current)</i>						50	45	50	50	48
<i>Asian/Pacific Islander (2003-08)</i>	33	35	32	38	50					
<i>Native Hawaiian or Other Pacific Islander (2008-current)</i>						3	4	2	3	5
<i>Black or African American</i>	47	68	51	60	83	97	81	81	62	54
<i>Hispanic/Latino</i>	164	191	219	226	250	275	317	367	300	286
<i>White</i>	1768	1891	1949	2049	2179	2245	2255	2519	2186	2117
<i>Multiple Races Reported</i>						5	10	12	11	18
<i>Not Reported or Unknown</i>	76	90	78	86	102	139	243	144	451	437
<i>Total of Student Population</i>	2101	2291	2347	2476	2670	2824	2968	3190	3080	2975

Annual Percent Distribution of Ethnicity/Race of Students (2003-04 through 2012-13)



	2003-04	2004-05	2005-06	2006-07	2007-08	2008-09	2009-10	2010-11	2011-12	2012-13
American Indian or Alaskan Native	0.6%	0.7%	0.8%	0.7%	0.2%	0.4%	0.4%	0.5%	0.6%	0.3%
Asian						1.8%	1.5%	1.6%	1.6%	1.6%
Asian/Pacific Islander	1.6%	1.5%	1.4%	1.5%	1.9%					
Native Hawaiian or Other Pacific Islander						0.1%	0.1%	0.1%	0.1%	0.2%
Black or African American	2.2%	3.0%	2.2%	2.4%	3.1%	3.4%	2.7%	2.5%	2.0%	1.8%
Hispanic/Latino	7.8%	8.3%	9.3%	9.1%	9.4%	9.7%	10.7%	11.5%	9.7%	9.6%
White	84.2%	82.5%	83.0%	82.8%	81.6%	79.5%	76.0%	79.0%	71.0%	71.2%
Multiple Races Reported						0.2%	0.3%	0.4%	0.4%	0.6%
Not Reported or Unknown	3.6%	3.9%	3.3%	3.5%	3.8%	4.9%	8.2%	4.5%	14.6%	14.7%

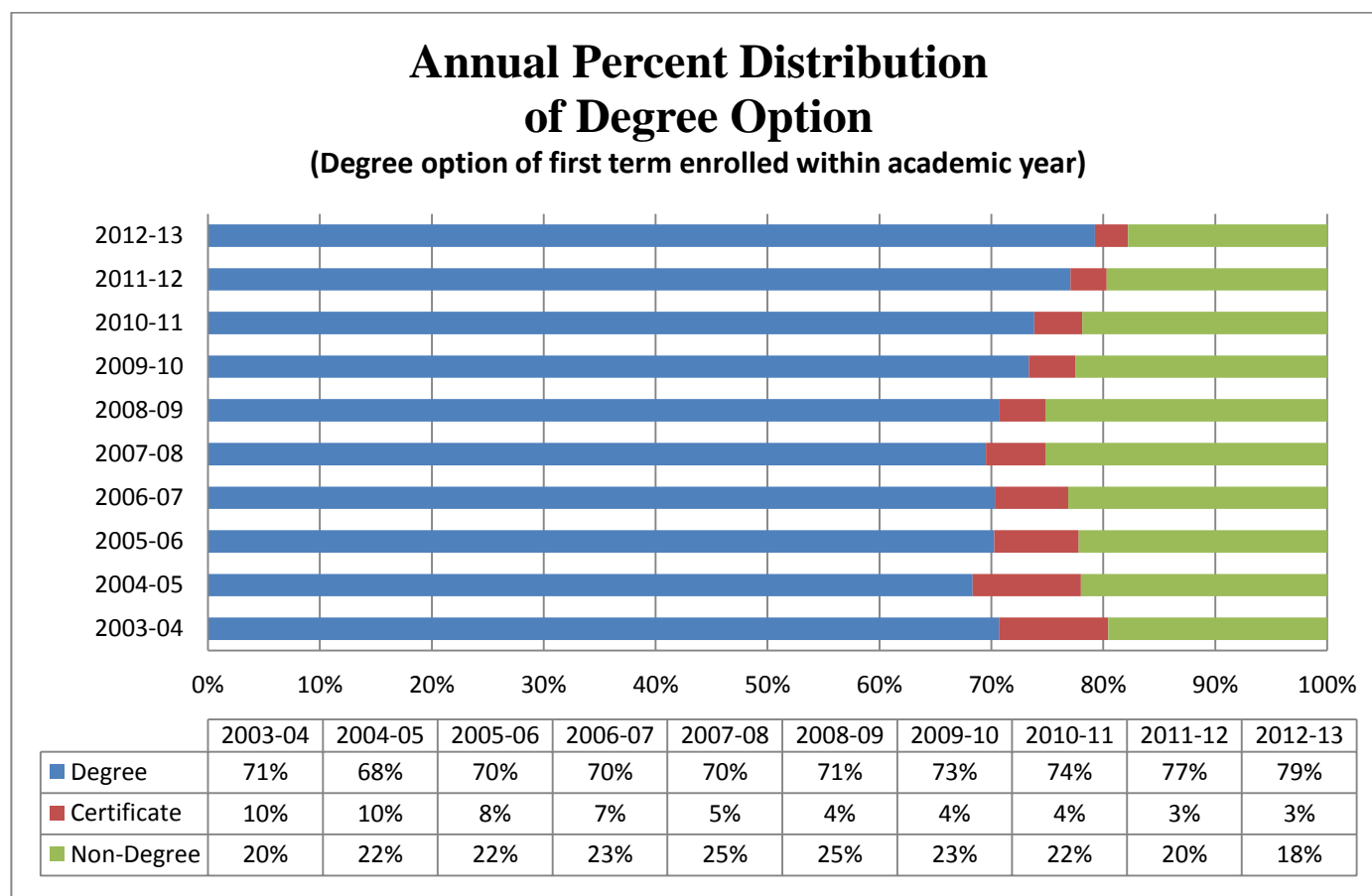
Ethnicity/Race Distribution by Term

Term		Total Term Enrollment	American Indian or Alaskan Native	Asian	Asian/Pacific Islander	Native Hawaiian or Other Pacific Islander	Black or African American	Hispanic/Latino	White	Multiple Races Reported	Not Reported or Unknown
Summer	2003	273	2	na	7		4	10	239	na	11
	2004	317	1	na	8	na	6	10	275	na	17
	2005	347	1	na	7	na	5	15	307	na	12
	2006	362	1	na	8	na	11	14	317	na	11
	2007	407	2	na	7	na	9	15	354	na	20
	2008	432	0	4	na	0	13	16	379	1	19
	2009	385	2	11	na	0	9	16	329	1	17
	2010	511	2	8	na	2	20	41	414	2	22
	2011	477	1	9	na	0	8	35	302	0	122
	2012	429	1	13	na	1	8	34	353	6	13
Fall	2003	1571	10	na	18	na	37	123	1325	na	58
	2004	1721	15	na	22	na	51	145	1425	na	63
	2005	1714	13	na	20	na	34	166	1423	na	58
	2006	1779	12	na	25	na	35	162	1481	na	64
	2007	1846	2	na	33	na	44	172	1532	na	63
	2008	1947	5	30	na	2	64	212	1560	4	70
	2009	2110	8	27	na	4	53	246	1680	6	86
	2010	2288	10	30	na	1	50	281	1812	10	94
	2011	2101	14	36	na	2	46	233	1689	9	72
	2012	2094	9	29	na	4	44	244	1694	12	58
Winter	2003	0		na		na				na	
	2004	50	0	na	4	na	1	4	40	na	1
	2005	0		na		na				na	
	2006	0		na		na				na	
	2007	93	0	na	3	na	6	5	77	na	2
	2008	122	1	2	na	0	8	4	78	0	29
	2009	113	0	1	na	0	4	4	63	1	40
	2010	131	0	4	na	0	3	6	114	1	3
	2011	107	0	5	na	0	1	5	37	0	59
	2012	98		4	na		1	1	44		48
Spring	2004	1511	10	na	27	na	39	117	1267	na	51
	2005	1624	9	na	19	na	47	136	1349	na	64
	2006	1659	13	na	24	na	34	144	1381	na	63
	2007	1706	10	na	25	na	36	164	1411	na	60
	2008	1789	4	na	31	na	59	180	1452	na	63
	2009	1893	8	33	na	3	52	195	1525	5	72
	2010	2032	10	26	na	4	49	222	1541	8	172
	2011	2097	12	26	na	2	42	231	1679	5	100
	2012	2088	12	34	na	2	38	210	1512	8	272
	2013	2020	7	24	na	3	33	165	1405	9	374

Enrollment by Degree and Major

Note: Secondary major data is not updated in Banner, therefore only primary information is reported.

Annual Enrollment by Degree Option (Degree option of first term enrolled within academic year)								
Academic Year	Degree			Certificate	Non-Degree	Total	Percent of Students Changing Degree within Academic Year	
	A.S.	A.A.	A.S. & A.A.				#	%
2003-04	972	513	1485	205	411	2101	93	4%
2004-05	1020	545	1565	222	504	2291	86	4%
2005-06	1092	557	1649	177	521	2347	74	3%
2006-07	1159	582	1741	162	573	2476	96	4%
2007-08	1276	580	1856	142	672	2670	87	3%
2008-09	1401	597	1998	115	711	2824	111	4%
2009-10	1568	609	2177	123	668	2968	88	3%
2010-11	1683	672	2355	137	698	3190	93	3%
2011-12	1716	658	2374	99	607	3080	91	3%
2012-13	1744	614	2358	88	529	2975	52	2%



Term Enrollment by Degree Option

Term		Total Count	Degree			Certificate	Non-Degree
			A.S.	A.A.	A.S. & A.A.		
Summer	2003	273	105	48	153	19	101
	2004	317	109	76	185	26	106
	2005	347	97	72	169	23	155
	2006	362	111	62	173	12	177
	2007	407	133	72	205	14	188
	2008	432	132	53	185	11	236
	2009	385	124	47	171	8	206
	2010	511	196	85	281	15	215
	2011	477	194	77	271	16	190
	2012	429	205	63	268	6	155
Fall	2003	1571	764	440	1204	158	209
	2004	1721	823	471	1294	176	251
	2005	1714	861	479	1340	133	241
	2006	1779	924	482	1406	128	245
	2007	1846	1016	472	1488	107	251
	2008	1947	1092	492	1584	76	287
	2009	2110	1248	536	1784	89	237
	2010	2288	1351	579	1930	105	253
	2011	2101	1267	552	1819	70	212
	2012	2094	1341	495	1836	59	199
Term		Total Count	Degree			Certificate	Non-Degree
			A.S.	A.A.	A.S. & A.A.		
Winter	2003	0					
	2004	50	12	12	24	3	23
	2005	0					
	2006	0					
	2007	93	21	15	36	0	57
	2008	122	26	10	36	1	85
	2009	113	15	14	29	0	84
	2010	131	25	12	37	0	94
	2011	107	16	11	27	0	80
	2012	98	14	14	28	1	69
Spring	2004	1511	744	422	1166	142	203
	2005	1624	775	444	1219	166	239
	2006	1659	838	446	1284	116	259
	2007	1706	880	452	1332	108	266
	2008	1789	969	418	1387	92	310
	2009	1893	1083	468	1551	79	263
	2010	2032	1191	480	1671	90	271
	2011	2097	1234	499	1733	92	272
	2012	2088	1273	491	1764	57	267
	2013	2020	1299	457	1756	58	206

Enrollment by Primary Major

Annual Enrollment by Primary Major (Non-Degree, AA/AS Degrees) (Major at first term enrolled within academic year)											
<i>Degree</i>	<i>Major</i>	2003-04	2004-05	2005-06	2006-07	2007-08	2008-09	2009-10	2010-11	2011-12	2012-13
000000	Non-Degree	411	504	521	573	672	711	668	698	607	529
AA	Fine Arts	87	96	94	89	77	59	47	45	49	42
AA	Fine Arts: Graphic Arts						7	29	27	29	32
AA	Fine Arts: Graphic Design			3	23	28	42	18	21	13	13
AA	Fine Arts: Photography						3	14	16	21	27
AA	Fine Arts: Studio Art									2	2
AA	Liberal Arts & Sciences	426	449	460	470	476	486	501	553	517	454
AA	Pathway to Teaching Careers								10	27	44
AS	Accounting	63	66	72	69	78	75	91	80	91	79
AS	Aviation Maintenance	6	2	7	5	8	3	1	3	4	3
AS	BOT: Adm Ast Info Processing	7	8	7	7	4	3	2	2	1	1
AS	BOT: Adm Ast Office Mgmt	27	28	17	25	24	28	30	31	34	30
AS	Bus Admin: Health Care Mgmt										1
AS	Bus Admin: Management	86	108	134	131	153	126	123	122	99	66
AS	Business Administration										35
AS	Computer Networking	0	13	23	37	40	35	57	54	57	68
AS	Computer Services	114	93	72	51	45	40	35	32	30	27
AS	Drug & Alcohol Rehab Counsel	3	1								
AS	Early Childhood Education			30	92	127	137	145	142	121	103
AS	Engineering Science	17	17	17	33	46	53	51	51	61	61
AS	General Studies	395	457	464	453	467	560	654	742	781	802
AS	Human Services	102	88	107	97	108	111	127	162	148	140
AS	Medical Assisting	142	136	135	149	162	201	218	215	238	222
AS	Tech Studies: Biomolecular Sci						2	7	7	9	14
AS	Tech Studies: Comp-Aided Desi						2	2	8	11	7
AS	Tech Studies: Construction					2	12	12	17	12	5
AS	Tech Studies: Eng Tech					1	3	7	4	2	2
AS	Tech Studies: Environmental								1	7	12
AS	Tech Studies: Lean Mfg&Supply							1	2	1	3
AS	Tech Studies: Plastics	8	1	2	2	2	1	2	1		6
AS	Technology Studies	2	2	5	8	8	9	3	7	9	57

Annual Enrollment by Primary Major (Certificates)
(Major at first term enrolled within academic year)

<i>Degree</i>	<i>Major</i>	2003-04	2004-05	2005-06	2006-07	2007-08	2008-09	2009-10	2010-11	2011-12	2012-13
CERT	Advanced Accounting	1		2	1	3	1		1		
CERT	Advanced Management	4	2	2	1	3	3	1	4	2	1
CERT	Allied Health Science	32	44	43	30	17	8	3	2	1	1
CERT	Applied Accounting	1	2	2	5	3	3	2	4	3	2
CERT	Applied Management	1	1	2	4	3	3	2	2	1	1
CERT	Arts Entrepreneur				1						1
CERT	Assoc Network Specialist	3	3	4	1		2			1	2
CERT	Bilingual Educ Paraprofessional	4	4	4							
CERT	BOT: Medical Off Skills	5	6	8	6	6	3	4	6	2	1
CERT	BOT: Medical Secretary	19	21	16	25	19	15	21	17	9	5
CERT	BOT: Office Skills Update	2	3	3		1	3	1	2	2	
CERT	BOT: Secretarial	13	13	10	4	8	5	5	2	1	1
CERT	BOT: Word Processing	3	2		3						
CERT	Business Administration	7	1								
CERT	Child Devl Associate Prep			1	3	5	1	3			4
CERT	Community Health Worker				1	1		1			
CERT	Construction Technology					1	1	3	3	2	
CERT	Criminal Justice					2	2	16	16	6	7
CERT	Early Childhood Education			1	4	10	11	14	11	17	16
CERT	Education Paraprofessional	21	27	14	4	1					
CERT	Graphic Arts								2	2	2
CERT	Graphic Communication	16	14	9	6	3	1	1			
CERT	Health Career Pathways						2	4	10	15	8
CERT	HIMT Coding Specialist	30	33	22	30	27	26	14	19	12	8
CERT	Lean Manufacturing							1	1	2	
CERT	Machine Technology Level I										6
CERT	Micro Software Apps	3	4	3	2		1	2	1		
CERT	Micro Software Fund			2	1						
CERT	Patient Care Technician	3	5	1	4	4	1	2	3	1	2
CERT	Phlebotomy	26	22	17	16	18	14	19	25	15	13
CERT	Photography								1	1	1
CERT	Plastics Technology	2	4	1		1	2	2	2	2	5
CERT	Pre-Service Correction	1	1	3	2	2	2				
CERT	Senior Network Specialist	0	1	1				1	1	1	1
CERT	Studio Art									1	
CERT	Technical Support	8	9	6	8	4	5	1	2		

Summer Term Enrollment by Primary Major (Non-Degree, AA/AS Degrees)

<i>Degree</i>	<i>Major</i>	2003	2004	2005	2006	2007	2008	2009	2010	2011	2012
0	Non-Degree	101	106	155	177	188	236	206	215	190	155
AA	Fine Arts	9	13	8	7	10	4	1	2	5	4
AA	Fine Arts: Graphic Arts								1	3	1
AA	Fine Arts: Graphic Design				1	5	2	2	3		1
AA	Fine Arts: Photography								1		1
AA	Fine Arts: Studio Art										
AA	Liberal Arts & Sciences	39	63	64	54	57	47	44	78	66	53
AA	Pathway to Teaching Careers									3	3
AS	Accounting	8	6	4	8	8	6	11	9	16	14
AS	Aviation Maintenance	2		1		1	2				2
AS	BOT: Adm Ast Info Processing		1		1	1					
AS	BOT: Adm Ast Office Mgmt	2	7	2	2	1	2	1	2	3	10
AS	Bus Admin: Health Care Mgmt										
AS	Bus Admin: Management	9	7	12	15	15	12	10	13	9	11
AS	Business Administration										
AS	Computer Networking			4	5	2	3	3	6	3	9
AS	Computer Services	7	7	4	1	2	1		2	6	3
AS	Drug & Alcohol Rehab Counsel										
AS	Early Childhood Education				9	22	21	18	20	16	15
AS	Engineering Science	4	2	1		4	9	1	10	9	14
AS	General Studies	43	41	42	48	47	45	45	68	76	70
AS	Human Services	8	9	12	6	7	4	11	16	14	18
AS	Medical Assisting	21	29	14	16	22	25	23	48	38	26
AS	Tech Studies: Biomolecular Sci							1			3
AS	Tech Studies: Comp-Aided Desi									1	2
AS	Tech Studies: Construction								1	2	
AS	Tech Studies: Eng Tech										
AS	Tech Studies: Environmental										
AS	Tech Studies: Lean Mfg&Suppl									1	1
AS	Tech Studies: Plastics						1				
AS	Technology Studies	1		1		1	1		1		7

Summer Term Enrollment by Primary Major (Certificates)

<i>Degree</i>	<i>Major</i>	2003	2004	2005	2006	2007	2008	2009	2010	2011	2012
CERT	Advanced Accounting										
CERT	Advanced Management						1			1	1
CERT	Allied Health Science	6	9	9	2	4	3	1	1		
CERT	Applied Accounting					1					
CERT	Applied Management									1	
CERT	Arts Entrepreneur										
CERT	Assoc Network Specialist										
CERT	Bilingual Educ Paraprof			1							
CERT	BOT: Medical Off Skills	1	1		1	2	1			1	
CERT	BOT: Medical Secretary	4	3	1	1	2	1	1	5	1	
CERT	BOT: Office Skills Update	1						1			
CERT	BOT: Secretarial	1	1	2			1				
CERT	BOT: Word Processing				1						
CERT	Business Administration	2									
CERT	Child Devl Associate Prep										
CERT	Community Health Worker										
CERT	Construction Technology								1	1	
CERT	Criminal Justice								1		1
CERT	Early Childhood Education							2	1	1	2
CERT	Education Paraprofessional	2	4	2							
CERT	Graphic Arts										
CERT	Graphic Communications	1		1							
CERT	Health Career Pathways								1	3	
CERT	HIMT Coding Specialist				3				2	2	
CERT	Lean Manufacturing										
CERT	Machine Technology Level I										1
CERT	Micro Software Apps				1						
CERT	Micro Software Fund										
CERT	Patient Care Technician		1	1		2			1	1	
CERT	Phlebotomy		7	6	3	3	3	3	2	4	1
CERT	Photography										
CERT	Plastics Technology										
CERT	Pre-Service Correction						1				
CERT	Senior Network Specialist										
CERT	Studio Art										
CERT	Technical Support	1									

Fall Term Enrollment by Primary Major (Non-Degree, AA/AS Degrees)

<i>Degree</i>	<i>Major</i>	2003	2004	2005	2006	2007	2008	2009	2010	2011	2012
0	Non-Degree	209	251	241	245	251	287	237	253	212	199
AA	Fine Arts	76	80	82	80	63	48	39	39	35	36
AA	Fine Arts: Graphic Arts					25	4	26	23	27	28
AA	Fine Arts: Graphic Design			1	19		38	17	17	12	8
AA	Fine Arts: Photography						1	12	13	18	24
AA	Fine Arts: Studio Art									1	2
AA	Liberal Arts & Sciences	364	391	396	383	385	401	442	480	433	358
AA	Pathway to Teaching Careers								7	26	39
AS	Accounting	55	62	60	55	58	58	73	63	69	53
AS	Aviation Maintenance	4	1	2	5	5	1	1	3	2	1
AS	BOT: Adm Ast Info Processing	3	7	5	6	3	3	2	2	1	1
AS	BOT: Adm Ast Office Mgmt	24	23	14	22	19	23	24	26	25	25
AS	Bus Admin: Health Care Mgmt										
AS	Bus Admin: Management	74	84	113	110	125	106	97	102	76	57
AS	Business Administration										16
AS	Computer Networking		8	17	32	33	32	46	51	47	57
AS	Computer Services	93	81	65	43	37	32	25	25	21	18
AS	Drug & Alcohol Rehab Counsel	2	1								
AS	Early Childhood Education			17	70	102	110	131	126	98	85
AS	Engineering Science	14	15	16	29	40	49	40	40	46	52
AS	General Studies	305	350	351	347	370	415	498	583	546	600
AS	Human Services	78	71	85	87	85	90	106	123	114	113
AS	Medical Assisting	105	118	113	110	127	148	180	171	175	174
AS	Tech Studies: Biomolecular Sci						2	4	7	7	13
AS	Tech Studies: Comp-Aided Desi						2	1	5	11	6
AS	Tech Studies: Construction					2	11	12	14	13	5
AS	Tech Studies: Eng Tech						2	3	3	2	1
AS	Tech Studies: Environmental									5	10
AS	Tech Studies: Lean Mfg&Supply							1	1	0	3
AS	Tech Studies: Plastics	6	1	1	2	2	1	2	1	0	
AS	Technology Studies	1	1	2	6	7	7	2	5	9	51

Fall Term Enrollment by Primary Major (Certificates)

<i>Degree</i>	<i>Major</i>	2003	2004	2005	2006	2007	2008	2009	2010	2011	2012
CERT	Advanced Accounting	1		2	1	3	1		1		
CERT	Advanced Management	4	2	1	1	2	3	1	3	1	
CERT	Allied Health Science	27	42	33	23	12	2	2	1	1	1
CERT	Applied Accounting	1	2	1	4	3	3	2	3	3	2
CERT	Applied Management	1	1	2	3	3	1	1	2	1	1
CERT	Arts Entrepreneur										
CERT	Assoc Network Specialist	2	3	2	1		2			1	1
CERT	Bilingual Educ Paraprofessional	4	4	3							
CERT	BOT: Medical Off Skills	3	5	7	4	3	4	3	5	1	1
CERT	BOT: Medical Secretary	14	15	12	23	17	9	13	15	8	5
CERT	BOT: Office Skills Update	2	3	3		1	1	1		2	
CERT	BOT: Secretarial	11	8	7	2	7	4	5	2	1	1
CERT	BOT: Word Processing	3	2		2						
CERT	Business Administration	6	1								
CERT	Child Devl Associate Prep				2	3	1	1			1
CERT	Community Health Worker							1			
CERT	Construction Technology					1	1	3	2		
CERT	Criminal Justice					2	2	10	13	5	4
CERT	Early Childhood Education				3	6	5	12	9	13	12
CERT	Education Paraprofessional	14	17	13	4	1					
CERT	Graphic Arts								2	2	2
CERT	Graphic Communications	13	11	8	5	3	1	1			
CERT	Health Career Pathways						1	1	5	8	6
CERT	HIMT Coding Specialist	24	28	18	27	17	22	16	17	9	7
CERT	Lean Manufacturing							1	1	1	
CERT	Machine Technology Level I										5
CERT	Micro Software Apps	3	3	2	2			2			
CERT	Micro Software Fund			1	1						
CERT	Patient Care Technician	2	5	1	3	3	1		3		
CERT	Phlebotomy	15	13	10	10	15	7	10	16	9	9
CERT	Photography								1	1	1
CERT	Plastics Technology	2	3	1			1	2	2	1	
CERT	Pre-Service Correction		1	2	2	2	1				
CERT	Senior Network Specialist			1					1	1	
CERT	Studio Art								1	1	
CERT	Technical Support	6	7	3	5	3	3	1			

Winter Term Enrollment by Primary Major (Non-Degree, AA/AS Degrees)

<i>Degree</i>	<i>Major</i>	2003	2004	2005	2006	2007	2008	2009	2010	2011	2012
0	Non-Degree		23			57	85	84	94	80	69
AA	Fine Arts						2	1		1	2
AA	Fine Arts: Graphic Arts										
AA	Fine Arts: Graphic Design							1			1
AA	Fine Arts: Photography										
AA	Fine Arts: Studio Art										
AA	Liberal Arts & Sciences		12			15	8	12	12	10	10
AA	Pathway to Teaching Careers										1
AS	Accounting		1			2	3		1	1	
AS	Aviation Maintenance										
AS	BOT: Adm Ast Info Processing										
AS	BOT: Adm Ast Office Mgmt						1				
AS	Bus Admin: Health Care Mgmt										
AS	Bus Admin: Management		1			1	3	3	2		2
AS	Business Administration										
AS	Computer Networking					2		2			
AS	Computer Services								1		
AS	Drug & Alcohol Rehab Counsel										
AS	Early Childhood Education							3	1	2	1
AS	Engineering Science					2	1			1	
AS	General Studies		7			11	12	4	14	11	8
AS	Human Services		1			2	1	2	1		1
AS	Medical Assisting		2				2	1	4	1	2
AS	Tech Studies: Biomolecular Sci						1				
AS	Tech Studies: Comp-Aided Desi										
AS	Tech Studies: Construction										
AS	Tech Studies: Eng Tech								1		
AS	Tech Studies: Environmental										
AS	Tech Studies: Lean Mfg&Supply										
AS	Tech Studies: Plastics										
AS	Technology Studies					1	2				

Winter Term Enrollment by Primary Major (Certificates)

<i>Degree</i>	<i>Major</i>	2003	2004	2005	2006	2007	2008	2009	2010	2011	2012
CERT	Advanced Accounting										
CERT	Advanced Management										
CERT	Allied Health Science		3								
CERT	Applied Accounting										
CERT	Applied Management										
CERT	Arts Entrepreneur										
CERT	Assoc Network Specialist										
CERT	Bilingual Educ Paraprof										
CERT	BOT: Medical Off Skills										
CERT	BOT: Medical Secretary										
CERT	BOT: Office Skills Update										
CERT	BOT: Secretarial										
CERT	BOT: Word Processing										
CERT	Business Administration										
CERT	Child Devl Associate Prep										
CERT	Community Health Worker										
CERT	Construction Technology										
CERT	Criminal Justice										
CERT	Early Childhood Education										
CERT	Education Paraprofessional										
CERT	Graphic Arts										
CERT	Graphic Communications										
CERT	Health Career Pathways										1
CERT	HIMT Coding Specialist										
CERT	Lean Manufacturing										
CERT	Machine Technology Level I										
CERT	Micro Software Apps										
CERT	Micro Software Fund										
CERT	Patient Care Technician										
CERT	Phlebotomy						1				
CERT	Photography										
CERT	Plastics Technology										
CERT	Pre-Service Correction										
CERT	Senior Network Specialist										
CERT	Studio Art										
CERT	Technical Support										

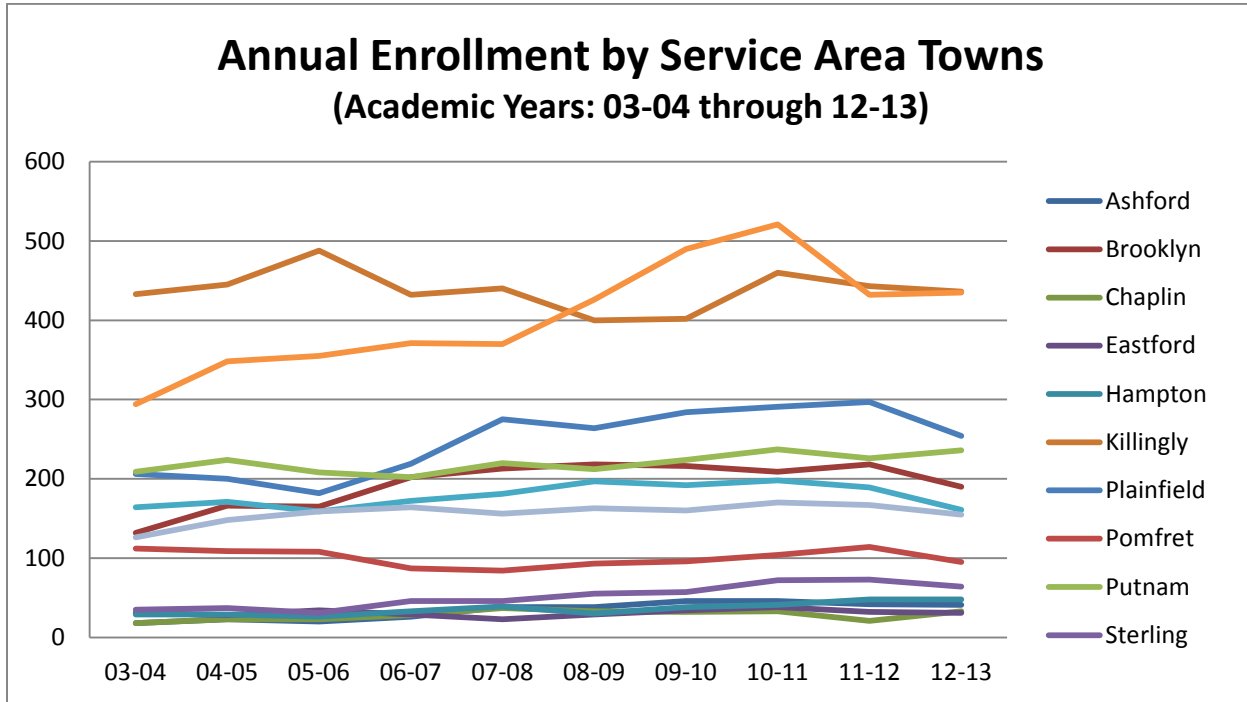
Spring Term Enrollment by Primary Major (Non-Degree, AA/AS Degrees)

<i>Degree</i>	<i>Major</i>	2004	2005	2006	2007	2008	2009	2010	2011	2012	2013
0	Non-Degree	203	239	259	266	310	263	271	272	267	206
AA	Fine Arts	64	76	84	68	54	39	35	31	32	27
AA	Fine Arts: Graphic Arts						9	26	22	22	23
AA	Fine Arts: Graphic Design			3	22	21	25	15	16	10	10
AA	Fine Arts: Photography						4	10	11	18	22
AA	Fine Arts: Studio Art								1	2	2
AA	Liberal Arts & Sciences	358	368	359	362	343	391	394	407	382	335
AA	Pathway to Teaching Careers								11	25	38
AS	Accounting	47	56	53	53	59	66	66	60	74	62
AS	Aviation Maintenance	4	2	6	3	6	2	1	2	3	
AS	BOT: Adm Ast Info Processing	7	6	5	8	4	1	2		1	1
AS	BOT: Adm Ast Office Mgmt	20	17	16	20	18	19	25	24	23	21
AS	Bus Admin: Health Care Mgmt										1
AS	Bus Admin: Management	66	88	106	109	110	88	92	87	77	44
AS	Business Administration										40
AS	Computer Networking	1	15	20	25	34	28	47	48	45	54
AS	Computer Services	89	65	49	34	29	27	24	20	20	20
AS	Drug & Alcohol Rehab Counsel	2									
AS	Early Childhood Education			35	74	97	112	109	101	82	91
AS	Engineering Science	12	10	15	31	46	42	47	43	48	55
AS	General Studies	301	338	351	331	331	416	485	522	575	581
AS	Human Services	73	73	75	69	88	80	106	125	108	95
AS	Medical Assisting	115	103	103	116	130	177	160	164	177	154
AS	Tech Studies: Biomolecular Sci						4	5	4	11	6
AS	Tech Studies: Comp-Aided Desi					1	1	2	6	7	6
AS	Tech Studies: Construction					5	11	11	16	9	2
AS	Tech Studies: Eng Tech					1	1	5	3	1	1
AS	Tech Studies: Environmental								2	8	11
AS	Tech Studies: Lean Mfg&Supply							1	1		3
AS	Tech Studies: Plastics	5		1	1	2	1				6
AS	Technology Studies	2	2	3	6	8	7	3	6	4	45

Spring Term Enrollment by Primary Major (Certificates)

<i>Degree</i>	<i>Major</i>	2004	2005	2006	2007	2008	2009	2010	2011	2012	2013
CERT	Advanced Accounting			1		2					
CERT	Advanced Management	2	1	2	1	1	2	1	2		
CERT	Allied Health Science	28	40	22	21	9	5			1	1
CERT	Applied Accounting		1	2	3	2	2	2	1	2	
CERT	Applied Management		3	1	3	3	3	2	2		1
CERT	Arts Entrepreneur				1						1
CERT	Assoc Network Specialist	2	3	3	1						1
CERT	Bilingual Educ Paraprof		4	2							
CERT	BOT: Medical Off Skills	2	5	7	6	2	3	4	3		
CERT	BOT: Medical Secretary	11	16	15	15	10	12	17	10	3	
CERT	BOT: Office Skills Update	2	3	2		1	2	1	2		
CERT	BOT: Secretarial	7	9	6	3	5	4	4	1	1	
CERT	BOT: Word Processing	3	1	1	1						
CERT	Business Administration	1	1								
CERT	Child Devl Associate Prep			1	3	2	1	3			3
CERT	Community Health Worker				1	1					
CERT	Construction Technology					1		1	2	1	
CERT	Criminal Justice					2	1	11	9	3	5
CERT	Early Childhood Education			1	3	9	8	11	9	13	8
CERT	Education Paraprofessional	19	20	6	3						
CERT	Graphic Arts								1	1	1
CERT	Graphic Communications	9	10	5	3	2	1				
CERT	Health Career Pathways						2	4	7	7	7
CERT	HIMT Coding Specialist	24	20	18	18	24	18	12	12	8	8
CERT	Lean Manufacturing								2	3	
CERT	Machine Technology Level I										3
CERT	Micro Software Apps	3	3	2			1	1	1		
CERT	Micro Software Fund			2							
CERT	Patient Care Technician	2	3	1	3	2		2			2
CERT	Phlebotomy	18	13	8	12	10	9	11	24	11	10
CERT	Photography									1	1
CERT	Plastics Technology	3	1			1	1	2	2	1	5
CERT	Pre-Service Correction	1	1	2	1	1	1				
CERT	Senior Network Specialist		1					1	1		1
CERT	Studio Art								1	1	
CERT	Technical Support	5	7	6	6	2	3				

Enrollment by Town of Residency



Town Groupings (Service Area and Surrounding Towns):		
Tax Code	Tax Town Name	Towns Within Tax Code
003	Ashford	Ashford
019	Brooklyn	Brooklyn
022	Canterbury	Canterbury
024	Chaplin	Chaplin
030	Columbia	Columbia
032	Coventry	Coventry
039	Eastford	Eastford
058	Griswold	Griswold, Jewett City (since 04-05 contains all Lisbon students)
059	Groton	Groton, Mystic, West Mystic, Noank, part of Stonington
063	Hampton	Hampton
069	Killingly	Killingly, East Killingly, South Killingly, Danielson, Dayville, Ballouville, Rogers
071	Lebanon	Lebanon
073	Lisbon	Lisbon (but, most coded as 058 from Fall 2004 forward*)
078	Mansfield	Mansfield, Mansfield Center, Mansfield Depot, Storrs
086	Montville	Montville, Oakdale, Uncasville
104	Norwich	Norwich, Yantic
109	Plainfield	Plainfield, Moosup, C Village
112	Pomfret	Pomfret, Pomfret Center, Abington
116	Putnam	Putnam, East Putnam, West Putnam
136	Sterling	Sterling, Oneco
141	Thompson	Thompson, East Thompson, Grosvenordale, North Grosverndale, Quinebuag
160	Willington	Willington
163	Windham	Windham, North Windham, South Windham, Willimantic
169	Woodstock	Woodstock, East Woodstock, South Woodstock, Woodstock Valley

*Lisbon Coding issue currently being investigated at BOR Office

Annual Enrollment by Town (Residence at first term enrolled within academic year)										
Residency - Town	Academic Year									
	<i>03-04</i>	<i>04-05</i>	<i>05-06</i>	<i>06-07</i>	<i>07-08</i>	<i>08-09</i>	<i>09-10</i>	<i>10-11</i>	<i>11-12</i>	<i>12-13</i>
QVCC Area										
<i>Ashford</i>	18	23	20	26	38	38	46	46	42	41
<i>Brooklyn</i>	132	166	165	202	213	218	216	209	218	190
<i>Chaplin</i>	18	23	23	28	37	33	32	33	21	33
<i>Eastford</i>	31	28	34	29	23	29	34	38	32	31
<i>Hampton</i>	29	29	26	33	39	30	38	41	48	48
<i>Killingly</i>	433	445	488	432	440	400	402	460	443	436
<i>Plainfield</i>	206	200	182	219	275	264	284	291	297	254
<i>Pomfret</i>	112	109	108	87	84	93	96	104	114	95
<i>Putnam</i>	209	224	208	202	220	212	224	237	226	236
<i>Sterling</i>	35	37	31	46	46	55	57	72	73	64
<i>Thompson</i>	164	171	159	172	181	197	192	198	189	161
<i>Windham</i>	294	348	355	371	370	426	490	521	432	435
<i>Woodstock</i>	126	148	159	164	156	163	160	170	167	155
In state/Outside Service Area										
Canterbury	47	51	59	58	61	62	59	59	59	71
Columbia	18	16	18	20	23	28	28	26	28	25
Coventry	22	24	29	26	24	19	31	27	28	21
Griswold	21	33	30	39	51	57	64	58	66	65
Groton	4	4	7	2	12	12	14	15	20	17
Lebanon	7	13	18	26	29	36	30	34	31	32
Lisbon	6	2	0	0	0	0	0	0	0	0
Mansfield	50	51	61	74	72	91	91	102	111	111
Montville	5	4	7	4	2	4	9	15	10	14
Norwich	12	19	19	30	29	25	32	42	42	49
Willington	7	4	10	10	10	12	15	14	16	18
Other	68	88	102	146	200	284	291	332	327	337
Out of State										
New England	21	26	25	25	31	33	27	33	34	31
Outside New England	6	5	4	5	4	3	6	13	6	5
Summary										
QVCC Area	1807	1951	1958	2011	2122	2158	2271	2420	2302	2179
In state/Outside Service Area	267	309	360	435	513	630	664	724	738	760
Out of State	27	31	29	30	35	36	33	46	40	36
Total	2101	2291	2347	2476	2670	2824	2968	3190	3080	2975

Summer Term Enrollment by Town										
Residency - Town	Summer Term									
	2003	2004	2005	2006	2007	2008	2009	2010	2011	2012
QVCC Area										
Ashford	1	3	1	2	6	7	6	4	6	8
Brooklyn	15	20	22	23	37	31	27	31	26	30
Chaplin	4	4	1	2	6	6	3	5	3	4
Eastford	5	5	7	8	4	6	5	2	5	5
Hampton	6	7	4	6	3	5	4	4	4	6
Killingly	59	67	66	62	66	41	47	66	69	52
Plainfield	31	33	26	31	32	42	25	37	38	27
Pomfret	17	16	18	16	19	11	14	12	15	16
Putnam	33	37	21	31	30	25	18	38	30	21
Sterling	5	4	3	5	1	12	12	15	8	12
Thompson	28	30	31	31	35	33	23	27	24	19
Windham	15	20	21	23	30	22	20	52	33	31
Woodstock	26	26	23	22	19	27	19	28	23	27
In state/Outside Service Area										
Canterbury	11	12	18	8	7	7	7	14	7	15
Columbia	1	1	3	5	1	3	6	6	2	3
Coventry	1	5	6	2	3	2	5	3	4	1
Griswold	2	4	8	4	12	7	12	12	14	15
Groton	0	0	3	0	2	2	3	4	1	4
Lebanon	0	1	3	4	3	2	5	6	4	6
Lisbon	0	1	0	0	0	0	0	0	0	0
Mansfield	5	3	10	9	8	12	11	9	20	12
Montville	1	0	0	1	0	0	2	3	5	2
Norwich	1	3	2	2	8	4	6	2	4	7
Willington	1	0	0	2	1	2	1	2	2	2
Other	4	10	40	53	61	113	95	114	122	99
Out of State										
New England	1	4	7	7	12	8	6	8	7	4
Outside New England		1	3	3	1	2	3	7	1	1
Summary										
QVCC Area	245	272	244	262	288	268	223	321	284	258
In state/Outside Service Area	27	40	93	90	106	154	153	175	185	166
Out of State	1	5	10	10	13	10	9	15	8	5
Total	273	317	347	362	407	432	385	511	477	429

Fall Term Enrollment by Town										
Residency - Town	Fall Term									
	2003	2004	2005	2006	2007	2008	2009	2010	2011	2012
QVCC Area										
Ashford	13	20	16	15	26	31	32	40	27	32
Brooklyn	99	128	121	133	134	154	167	161	156	151
Chaplin	10	20	13	19	24	26	25	29	16	27
Eastford	25	22	20	20	16	21	29	32	28	25
Hampton	21	24	21	26	27	19	31	37	38	34
Killingly	326	342	355	344	327	292	313	356	325	343
Plainfield	151	166	144	164	197	202	213	223	224	197
Pomfret	82	79	83	66	61	66	74	79	74	73
Putnam	153	165	159	148	162	164	174	176	149	172
Sterling	25	26	26	29	35	40	39	52	55	54
Thompson	125	139	130	130	136	152	148	168	147	121
Windham	237	267	279	280	278	317	364	393	326	310
Woodstock	91	97	120	122	123	128	126	141	119	116
In state/Outside Service Area										
Canterbury	37	36	41	47	44	44	48	43	43	49
Columbia	11	10	12	14	15	19	19	20	18	14
Coventry	17	17	21	20	15	14	18	19	23	14
Griswold	11	26	23	28	38	46	45	44	47	49
Groton	3	2	1	1	7	8	5	6	11	12
Lebanon	7	8	11	17	17	21	24	23	23	19
Lisbon	5	1	0	0	0	0	0	0	0	0
Mansfield	39	38	37	57	53	63	62	76	77	83
Montville	5	3	4	3	2	3	9	9	4	9
Norwich	8	12	11	16	16	12	15	25	28	34
Willington	6	4	6	8	6	10	12	10	10	8
Other	45	47	41	60	68	76	102	99	109	129
Out of State										
New England	15	19	19	11	19	18	14	23	22	19
Outside New England	4	3	0	1	0	1	2	4	2	0
QVCC Area										
In state/Outside Service Area	1358	1495	1487	1496	1546	1612	1735	1887	1684	1655
Out of State	19	22	19	12	19	19	16	27	24	19
Total	1571	1721	1714	1779	1846	1947	2110	2288	2101	2094

Winter Term Enrollment by Town										
Residency - Town	Winter Term									
	2003	2004	2005	2006	2007	2008	2009	2010	2011	2012
QVCC Area										
Ashford		0			2	0	0	1	1	1
Brooklyn		4			2	6	1	4	2	6
Chaplin		1			1	0	0	1	0	1
Eastford		0			0	0	0	0	1	0
Hampton		0			0	0	1	1	3	0
Killingly		5			5	6	10	4	2	6
Plainfield		2			4	4	4	2	2	2
Pomfret		4			1	2	0	3	2	4
Putnam		4			2	6	4	8	2	3
Sterling					1	1	1	1	1	1
Thompson		4			4	9	9	2	4	4
Windham		3			7	3	4	2	4	1
Woodstock		2			4	1	2	3	2	3
In state/Outside Service Area										
Canterbury					3	4	2	0	2	2
Columbia					2	0	0	1	0	0
Coventry					0	1	4	0	1	0
Griswold					3	1	0	2	1	2
Groton					1	0	1	1	0	0
Lebanon					0	3	0	0	0	1
Lisbon					0	0	0	0	0	0
Mansfield					2	2	2	5	4	7
Montville					0	0	0	1	1	0
Norwich					1	4	1	2	0	1
Willington					0	1	0	0	1	0
Other		19			45	61	65	85	65	47
Out of State										
New England		2				5	1	2	4	3
Outside New England					3	2	1	0	2	3
Summary										
QVCC Area		29			33	38	36	32	26	32
In state/Outside Service Area		19			57	77	75	97	75	60
Out of State		2			3	7	2	2	6	6
Total		50			93	122	113	131	107	98

Spring Term Enrollment by Town										
Residency - Town	Spring Term									
	<i>2004</i>	<i>2005</i>	<i>2006</i>	<i>2007</i>	<i>2008</i>	<i>2009</i>	<i>2010</i>	<i>2011</i>	<i>2012</i>	<i>2013</i>
QVCC Area										
Ashford	14	14	16	23	28	28	33	30	33	26
Brooklyn	98	114	109	151	160	140	161	153	165	147
Chaplin	12	11	18	22	25	24	27	18	15	26
Eastford	22	22	23	16	16	18	26	32	22	21
Hampton	24	18	18	26	27	22	27	23	31	34
Killingly	321	327	360	296	293	279	294	335	321	312
Plainfield	147	143	140	154	199	179	208	213	220	187
Pomfret	69	77	74	61	58	62	77	71	85	71
Putnam	151	163	150	137	148	157	162	165	150	179
Sterling	26	24	21	30	35	41	45	54	58	47
Thompson	116	125	116	119	125	138	149	149	131	120
Windham	217	257	248	272	262	329	361	349	322	325
Woodstock	92	109	112	119	114	114	108	115	123	117
In state/Outside Service Area										
Canterbury	38	39	37	34	41	48	41	45	45	49
Columbia	16	14	13	10	16	23	18	15	22	16
Coventry	15	19	22	16	16	15	21	19	14	13
Griswold	15	23	17	31	32	37	44	38	44	51
Groton	2	2	4	1	7	10	8	8	13	5
Lebanon	4	9	13	17	23	27	19	24	22	20
Lisbon	4	1	0	0	0	0	0	0	0	0
Mansfield	31	37	45	46	57	61	69	66	77	65
Montville	3	1	6	2	1	4	6	4	4	5
Norwich	8	13	15	24	18	14	23	30	26	31
Willington	4	2	7	7	7	8	9	9	9	11
Other	43	38	55	74	67	98	80	108	114	121
Out of State										
New England	15	20	19	16	14	17	15	19	18	20
Outside New England	4	2	1	2	0	0	1	5	4	1
Summary										
QVCC Area	1309	1404	1405	1426	1490	1531	1678	1707	1676	1612
In state/Outside Service Area	183	198	234	262	285	345	338	366	390	387
Out of State	19	22	20	18	14	17	16	24	22	21
Total	1511	1624	1659	1706	1789	1893	2032	2097	2088	2020

Enrollment of Recent High School Graduates (Students graduating H.S. in the spring term prior to Academic Year)

Annual Enrollment of Same Year HS Grads											
High School		Academic Year									
Name	Code	2003-04	2004-05	2005-06	2006-07	2007-08	2008-09	2009-10	2010-11	2011-12	2012-13
		2003 HS Grad	2004 HS Grad	2005 HS Grad	2006 HS Grad	2007 HS Grad	2008 HS Grad	2009 HS Grad	2010 HS Grad	2011 HS Grad	2012 HS Grad
Arts at the Capital Theatre	070927										1
E O Smith HS	070754	7	8	12	18	7	6	15	9	12	16
EastConn Adult Ed	E25314		2	2	5	9	3	9	4	9	15
EastConn Secondary Program	070113		4	2	2	1			2		
GED	070997	31	35	40	40	27	25	20	20	25	22
H H Ellis Tech HS	070133	12	14	11	11	15	10	18	24	25	24
Home Education	I00001	1	4	4	4	3	8	15	5	8	11
Hyde School	070972	1		2				1			1
Killingly HS	070135	49	62	42	57	55	52	49	58	31	48
Marianapolis Prep School	070780	2	1	1	2	3	3	1	3	0	0
Parish Hill HS	070093	1	2	3	5	10	7	10	10	7	12
Plainfield HS	070090	22	15	10	22	32	43	35	41	39	31
Putnam HS	070630	25	26	27	13	26	21	23	33	16	20
Putnam Science Academy	070631										
QMC	070136								3	11	9
Tourtellotte Mem HS	070565	19	26	23	19	26	34	24	26	17	26
Willimantic Adult Ed	E16361										
Windham HS	070930	22	29	28	44	31	40	51	49	38	26
Windham Tech HS	070935	6	5	16	14	8	14	5	14	9	14
Woodstock Academy	070975	63	59	68	61	56	62	86	72	74	68
Total of Listed Schools		261	292	291	317	309	328	362	373	321	344
Total of Schools Not Listed		34	34	42	39	45	65	49	61	51	53
Total		295	326	333	356	354	393	411	434	372	397

Summer Term Enrollment of Same Year HS Grads											
High School		Summer Term									
Name	Code	2003	2004	2005	2006	2007	2008	2009	2010	2011	2012
		2003 HS Grad	2004 HS Grad	2005 HS Grad	2006 HS Grad	2007 HS Grad	2008 HS Grad	2009 HS Grad	2010 HS Grad	2011 HS Grad	2012 HS Grad
Arts at the Capital Theatre	070927										
E O Smith HS	070754				1	1				1	1
EastConn Adult Ed	E25314			1							2
EastConn Secondary Program	070113			1							
GED	070997		1	1	1	1	2		1	2	
H H Ellis Tech HS	070133	2	1		1		1				3
Home Education	I00001			1	2			1			1
Hyde School	070972										
Killingly HS	070135	1		1	1	1				2	6
Marianapolis Prep School	070780	1	1			1					
Parish Hill HS	070093							1	1		
Plainfield HS	070090	1				1	2		2	1	2
Putnam HS	070630	1	2		3	2	1				1
Putnam Science Academy	070631										
QMC	070136								1		
Tourtellotte Mem HS	070565	3		1	1	4					2
Willimantic Adult Ed	E16361										
Windham HS	070930							1	2		
Windham Tech HS	070935									1	
Woodstock Academy	070975	6	2		3	2	4	3	1	1	2
Total of Listed Schools		15	7	6	13	13	10	6	8	8	20
Total of Schools Not Listed		0	1	7	2	1	5	3	3	5	2
Total		15	8	13	15	14	15	9	11	13	22

Fall Term Enrollment of Same Year HS Grads											
High School		Fall Term									
Name	Code	2003	2004	2005	2006	2007	2008	2009	2010	2011	2012
		2003 HS Grad	2004 HS Grad	2005 HS Grad	2006 HS Grad	2007 HS Grad	2008 HS Grad	2009 HS Grad	2010 HS Grad	2011 HS Grad	2012 HS Grad
Arts at the Capital Theatre	070927										1
E O Smith HS	070754	5	4	9	16	6	4	10	6	11	11
EastConn Adult Ed	E25314		2	2	5	5	3	7	3	6	10
EastConn Secondary Program	070113		2	2	1	1			2		
GED	070997	20	26	18	24	14	14	11	15	10	11
H H Ellis Tech HS	070133	9	10	9	7	13	8	13	22	18	22
Home Education	I00001	1	4	4	4	3	8	12	5	6	8
Hyde School	070972			1				1			1
Killingly HS	070135	43	56	39	48	49	43	41	50	26	42
Marianapolis Prep School	070780	1		1	2	2	3	1	1		
Parish Hill HS	070093	1	2	2	5	9	6	10	9	6	11
Plainfield HS	070090	19	13	10	20	27	35	27	31	30	26
Putnam HS	070630	16	20	20	9	23	16	19	28	13	16
Putnam Science Academy	070631										
QMC	070136								3	8	7
Tourtellotte Mem HS	070565	16	25	20	15	22	30	22	24	13	22
Willimantic Adult Ed	E16361										
Windham HS	070930	14	19	20	30	25	30	38	34	29	18
Windham Tech HS	070935	6	4	12	12	8	12	4	12	9	8
Woodstock Academy	070975	50	49	61	51	47	50	76	63	64	57
Total of Listed Schools		201	236	230	249	254	262	292	308	249	271
Total of Schools Not Listed		22	25	34	34	35	46	40	49	36	39
Total		223	261	264	283	289	308	332	357	285	310

Winter Term Enrollment of Same Year HS Grads											
High School		Winter Term									
Name	Code	2003	2004	2005	2006	2007	2008	2009	2010	2011	2012
		2003 HS Grad	2004 HS Grad	2005 HS Grad	2006 HS Grad	2007 HS Grad	2008 HS Grad	2009 HS Grad	2010 HS Grad	2011 HS Grad	2012 HS Grad
Arts at the Capital Theatre	070927										
E O Smith HS	070754										
EastConn Adult Ed	E25314										
EastConn Secondary Program	070113										
GED	070997					1	2				
H H Ellis Tech HS	070133									1	
Home Education	I00001		1					1	1		
Hyde School	070972										
Killingly HS	070135							1		1	1
Marianapolis Prep School	070780								1		
Parish Hill HS	070093										
Plainfield HS	070090		1			1				1	
Putnam HS	070630								1		
Putnam Science Academy	070631										
QMC	070136										
Tourtellotte Mem HS	070565					1					
Willimantic Adult Ed	E16361										
Windham HS	070930					2	1				
Windham Tech HS	070935										
Woodstock Academy	070975		3								1
Total of Listed Schools			5			5	3	2	3	3	2
Total of Schools Not Listed						4	6	0	3	1	1
Total			5			9	9	2	6	4	3

Spring Term Enrollment of Same Year HS Grads											
High School		Spring Term									
Name	Code	2004	2005	2006	2007	2008	2009	2010	2011	2012	2013
		2003 HS Grad	2004 HS Grad	2005 HS Grad	2006 HS Grad	2007 HS Grad	2008 HS Grad	2009 HS Grad	2010 HS Grad	2011 HS Grad	2012 HS Grad
Arts at the Capital Theatre	070927										
E O Smith HS	070754	7	6	11	14	6	5	13	7	10	12
EastConn Adult Ed	E25314		4	2	2	7	2	7	4	6	13
EastConn Secondary Program	070113		1		1	1			1		
GED	070997	24	28	34	32	26	20	17	12	22	20
H H Ellis Tech HS	070133	9	12	9	8	10	8	15	21	23	21
Home Education	I00001	1	4	5	3	3	7	15	4	10	10
Hyde School	070972	1		1				1			1
Killingly HS	070135	44	53	30	48	45	46	48	48	25	39
Marianapolis Prep School	070780	1			2	2	3	1	2		
Parish Hill HS	070093	1		1	4	8	6	8	9	7	10
Plainfield HS	070090	18	12	7	19	25	38	30	35	38	19
Putnam HS	070630	19	21	21	6	16	19	20	25	13	15
Putnam Science Academy	070631										
QMC	070136								1	9	7
Tourtellotte Mem HS	070565	13	23	18	17	20	27	21	21	17	22
Willimantic Adult Ed	E16361										
Windham HS	070930	16	25	23	39	25	38	42	37	32	24
Windham Tech HS	070935	3	5	12	13	8	12	4	13	7	13
Woodstock Academy	070975	53	50	53	51	45	46	74	60	65	56
Total of Listed Schools											
		210	244	227	259	247	277	316	300	284	282
Total of Schools Not Listed											
		24	25	27	29	35	47	32	37	33	31
Total											
		234	269	254	288	282	324	348	337	317	313